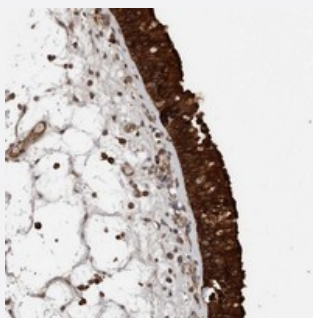


KIF26B polyclonal antibody

Catalog # PAB22181 Size 100 uL

Applications



Immunohistochemistry (Formalin/PFA-fixed paraffin-embedded sections)

Immunohistochemical staining of human nasopharynx with KIF26B polyclonal antibody (Cat # PAB22181) shows strong cytoplasmic positivity in respiratory epithelial cells at 1:50-1:200 dilution.

Specification

Product Description	Rabbit polyclonal antibody raised against recombinant KIF26B.
Immunogen	Recombinant protein corresponding to amino acids of human KIF26B.
Sequence	GYPMKTNITVYPCIAMSPRNIQEPEAPTATPKAGPTLAQSRESKENS AKKEMKFEDPWLKREEEV KKETAHPNEEGMMRCETATGPSNAETR
Host	Rabbit
Reactivity	Human
Form	Liquid
Purification	Antigen affinity purification
Isotype	IgG
Recommend Usage	Immunohistochemistry (1:50-1:200) The optimal working dilution should be determined by the end user.
Storage Buffer	In PBS, pH 7.2 (40% glycerol, 0.02% sodium azide)

Storage Instruction

Store at 4°C. For long term storage store at -20°C.
Aliquot to avoid repeated freezing and thawing.

Note

This product contains sodium azide: a POISONOUS AND HAZARDOUS SUBSTANCE which should be handled by trained staff only.

Applications

- Immunohistochemistry (Formalin/PFA-fixed paraffin-embedded sections)

Immunohistochemical staining of human nasopharynx with KIF26B polyclonal antibody (Cat # PAB22181) shows strong cytoplasmic positivity in respiratory epithelial cells at 1:50-1:200 dilution.

Gene Info — KIF26B

Entrez GeneID[55083](#)**Protein Accession#**[Q2KJY2](#)**Gene Name**

KIF26B

Gene Alias

FLJ10157, MGC35030

Gene Description

kinesin family member 26B

Gene Ontology[Hyperlink](#)**Other Designations**

-

Disease

- [Tobacco Use Disorder](#)