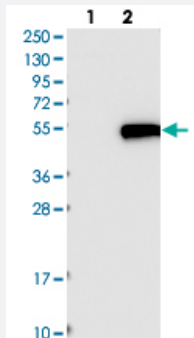


C1orf59 polyclonal antibody

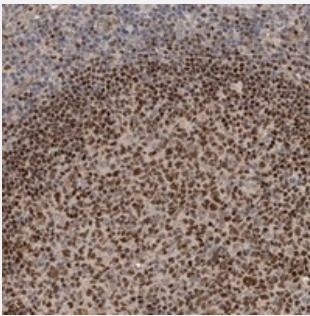
Catalog # PAB22159 Size 100 uL

Applications



Western Blot (Transfected lysate)

Western blot analysis of Lane 1: Negative control (vector only transfected HEK293T lysate), Lane 2: Over-expression Lysate (Co-expressed with a C-terminal myc-DDK tag (~3.1 kDa) in mammalian HEK293T cells) with C1orf59 polyclonal antibody (Cat # PAB22159).



Immunohistochemistry (Formalin/PFA-fixed paraffin-embedded sections)

Immunohistochemical staining of human lymph node with C1orf59 polyclonal antibody (Cat # PAB22159) shows strong nuclear positivity in reaction center cells and lymphoid cells outside reaction centra.

Specification

Product Description	Rabbit polyclonal antibody raised against recombinant C1orf59.
Immunogen	Recombinant protein corresponding to amino acids of human C1orf59.
Sequence	MEENNLQCSSVVDGNFEEVPRETAIQFKPPLYRQRYQFVKNLVDQHEPKKVADLGCGDTSLLRL LKVNPCELLVGV
Host	Rabbit
Reactivity	Human
Form	Liquid

Purification	Antigen affinity purification
Isotype	IgG
Recommend Usage	Immunohistochemistry (1:50-1:200) Western Blot (1:250-1:500) The optimal working dilution should be determined by the end user.
Storage Buffer	In PBS, pH 7.2 (40% glycerol, 0.02% sodium azide)
Storage Instruction	Store at 4°C. For long term storage store at -20°C. Aliquot to avoid repeated freezing and thawing.
Note	This product contains sodium azide: a POISONOUS AND HAZARDOUS SUBSTANCE which should be handled by trained staff only.

Applications

- Western Blot (Transfected lysate)

Western blot analysis of Lane 1: Negative control (vector only transfected HEK293T lysate), Lane 2: Over-expression Lysate (Co-expressed with a C-terminal myc-DDK tag (~3.1 kDa) in mammalian HEK293T cells) with C1orf59 polyclonal antibody (Cat # PAB22159).

- Immunohistochemistry (Formalin/PFA-fixed paraffin-embedded sections)

Immunohistochemical staining of human lymph node with C1orf59 polyclonal antibody (Cat # PAB22159) shows strong nuclear positivity in reaction center cells and lymphoid cells outside reaction centra.

Gene Info — C1orf59

Entrez GeneID	113802
Protein Accession#	Q5T8I9
Gene Name	C1orf59
Gene Alias	FLJ30525, HEN1, MGC111091, RP11-256E16.2
Gene Description	chromosome 1 open reading frame 59
Gene Ontology	Hyperlink
Other Designations	OTTHUMP00000012824 hypothetical protein LOC113802