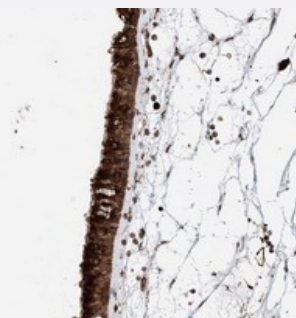


# DNAH8 polyclonal antibody

Catalog # PAB22154      Size 100 uL

## Applications



### Immunohistochemistry (Formalin/PFA-fixed paraffin-embedded sections)

Immunohistochemical staining of human nasopharynx with DNAH8 polyclonal antibody (Cat # PAB22154) shows strong cytoplasmic positivity in respiratory epithelial cells at 1:500-1:1000 dilution.

## Specification

Product Description	Rabbit polyclonal antibody raised against recombinant DNAH8.
Immunogen	Recombinant protein corresponding to amino acids of human DNAH8.
Sequence	ILNHKSKHVEEAVRELISIFEQMEVKYTGKVGKQSEQRKHVVFGSETEEGENNDYEANVNEFDTH DKEDEFKKECKEVFAFFSHQLLDSLQKATRLSLD
Host	Rabbit
Reactivity	Human
Form	Liquid
Purification	Antigen affinity purification
Isotype	IgG
Recommend Usage	Immunohistochemistry (1:500-1:1000) The optimal working dilution should be determined by the end user.
Storage Buffer	In PBS, pH 7.2 (40% glycerol, 0.02% sodium azide)

**Storage Instruction**

Store at 4°C. For long term storage store at -20°C.  
Aliquot to avoid repeated freezing and thawing.

**Note**

This product contains sodium azide: a POISONOUS AND HAZARDOUS SUBSTANCE which should be handled by trained staff only.

## Applications

- Immunohistochemistry (Formalin/PFA-fixed paraffin-embedded sections)

Immunohistochemical staining of human nasopharynx with DNAH8 polyclonal antibody (Cat # PAB22154) shows strong cytoplasmic positivity in respiratory epithelial cells at 1:500-1:1000 dilution.

## Gene Info — DNAH8

**Entrez GeneID**[1769](#)**Protein Accession#**[Q96JB1](#)**Gene Name**

DNAH8

**Gene Alias**

ATPase, FLJ25850, FLJ36115, FLJ36334, hdhc9

**Gene Description**

dynein, axonemal, heavy chain 8

**Omim ID**[603337](#)**Gene Ontology**[Hyperlink](#)**Gene Summary**

Dyneins are microtubule-associated motor protein complexes composed of several heavy, light, and intermediate chains. Dynein heavy chains (DHCs) are responsible for force production and ATPase activity and contain a highly conserved catalytic domain with 4 P-loop consensus motifs involved in nucleotide binding. Two major classes of dyneins, axonemal and cytoplasmic, have been identified. Axonemal dyneins, found in cilia and flagella, are components of the outer and inner dynein arms attached to the peripheral microtubule doublets. DNAH8 is an outer arm axonemal DHC (Chapelin et al., 1997 [PubMed 9256245]; Neesen et al., 1997 [PubMed 9373155]).[supplied by OMIM]

**Other Designations**

OTTHUMP00000017871|OTTHUMP00000039711|dynein, axonemal, heavy polypeptide 8

## Disease

- [Carcinoma](#)
- [Esophageal Neoplasms](#)

- [Genetic Predisposition to Disease](#)
- [Tuberculosis](#)