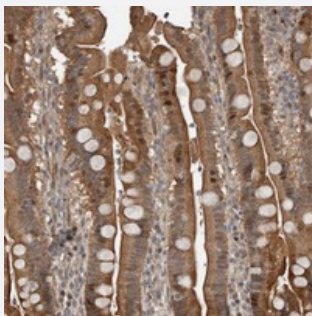


YOD1 polyclonal antibody

Catalog # PAB22152 Size 100 uL

Applications



Immunohistochemistry (Formalin/PFA-fixed paraffin-embedded sections)

Immunohistochemical staining of human duodenum with YOD1 polyclonal antibody (Cat # PAB22152) shows cytoplasmic, membranous and occasional nuclear positivity in glandular cells.

Specification

Product Description	Rabbit polyclonal antibody raised against recombinant YOD1.
Immunogen	Recombinant protein corresponding to amino acids of human YOD1.
Sequence	QRNFPDPDTPPLTIFSSNDDMLVQALELADEARRRRQFTDVNRFTLRMCVCQKGLTGQAEAREH AKETGHTNFGEV
Host	Rabbit
Reactivity	Human
Form	Liquid
Purification	Antigen affinity purification
Isotype	IgG
Recommend Usage	Immunohistochemistry (1:200-1:500) The optimal working dilution should be determined by the end user.
Storage Buffer	In PBS, pH 7.2 (40% glycerol, 0.02% sodium azide)

Storage Instruction

Store at 4°C. For long term storage store at -20°C.
Aliquot to avoid repeated freezing and thawing.

Note

This product contains sodium azide: a POISONOUS AND HAZARDOUS SUBSTANCE which should be handled by trained staff only.

Applications

- Immunohistochemistry (Formalin/PFA-fixed paraffin-embedded sections)

Immunohistochemical staining of human duodenum with YOD1 polyclonal antibody (Cat # PAB22152) shows cytoplasmic, membranous and occasional nuclear positivity in glandular cells.

Gene Info — YOD1

Entrez GeneID[55432](#)**Protein Accession#**[Q5VVQ6](#)**Gene Name**

YOD1

Gene Alias

DKFZp451J1719, DUBA8, OTUD2, PRO0907

Gene Description

YOD1 OTU deubiquinating enzyme 1 homolog (S. cerevisiae)

Gene Ontology[Hyperlink](#)**Gene Summary**

Deubiquitinating enzymes (DUBs; see MIM 603478) are proteases that specifically cleave ubiquitin (MIM 191339) linkages, negating the action of ubiquitin ligases. DUBA8 belongs to a DUB subfamily characterized by an ovarian tumor (OTU) domain.[supplied by OMIM]

Other Designations

OTTHUMP00000034284|OTU domain containing 2|YOD1 OTU deubiquinating enzyme 1 homolog|YOD1 OTU deubiquinating enzyme 1 homolog (yeast)

Pathway

- [Benzoate degradation via CoA ligation](#)
- [Biosynthesis of unsaturated fatty acids](#)
- [Limonene and pinene degradation](#)