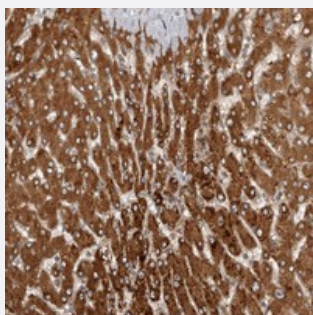


CEP350 polyclonal antibody

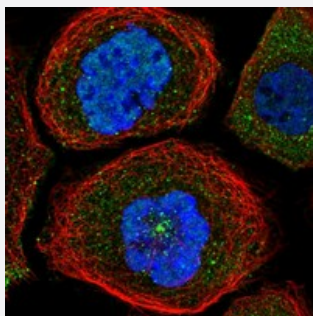
Catalog # PAB22134 Size 100 uL

Applications



Immunohistochemistry (Formalin/PFA-fixed paraffin-embedded sections)

Immunohistochemical staining of human liver with CEP350 polyclonal antibody (Cat # PAB22134) shows strong cytoplasmic positivity in hepatocytes.



Immunofluorescence

Immunofluorescent staining of human cell line A-431 with CEP350 polyclonal antibody (Cat # PAB22134) at 1-4 ug/mL dilution shows positivity in nucleus but not nucleoli and centrosome.

Specification

Product Description	Rabbit polyclonal antibody raised against recombinant CEP350.
Immunogen	Recombinant protein corresponding to amino acids of human CEP350.
Sequence	QDWFDEDFGLSSSHKIQKNKAEETVPLMAEPKRVTQQPCETLLAVPHTAEEVEILVHNAAEELW KWKELGHDLSISIPTKLLGCASKGLDIESTSKRVYK
Host	Rabbit
Reactivity	Human
Form	Liquid

Purification	Antigen affinity purification
Isotype	IgG
Recommend Usage	Immunohistochemistry (1:20-1:50) Immunofluorescence (1-4 ug/mL) The optimal working dilution should be determined by the end user.
Storage Buffer	In PBS, pH 7.2 (40% glycerol, 0.02% sodium azide)
Storage Instruction	Store at 4°C. For long term storage store at -20°C. Aliquot to avoid repeated freezing and thawing.
Note	This product contains sodium azide: a POISONOUS AND HAZARDOUS SUBSTANCE which should be handled by trained staff only.

Applications

- Immunohistochemistry (Formalin/PFA-fixed paraffin-embedded sections)

Immunohistochemical staining of human liver with CEP350 polyclonal antibody (Cat # PAB22134) shows strong cytoplasmic positivity in hepatocytes.

- Immunofluorescence

Immunofluorescent staining of human cell line A-431 with CEP350 polyclonal antibody (Cat # PAB22134) at 1-4 ug/mL dilution shows positivity in nucleus but not nucleoli and centrosome.

Gene Info — CEP350

Entrez GeneID	9857
Protein Accession#	Q5VT06
Gene Name	CEP350
Gene Alias	CAP350, FLJ38282, FLJ44058, GM133, KIAA0480
Gene Description	centrosomal protein 350kDa
Gene Ontology	Hyperlink

Gene Summary

The product of this gene is a large protein with a CAP-Gly domain typically found in cytoskeleton-associated proteins. The encoded protein primarily localizes to the centrosome, a non-membranous organelle that functions as the major microtubule-organizing center in animal cells. The encoded protein directly interacts with another large centrosomal protein and is required to anchor microtubules at the centrosome. It is also implicated in the regulation of a class of nuclear hormone receptors in the nucleus. Several alternatively spliced transcript variants have been found, but their full-length nature has not been determined. [provided by RefSeq]

Other Designations

OTTHUMP00000060646|centrosome associated protein 350|centrosome-associated protein 350

Disease

- [Tobacco Use Disorder](#)