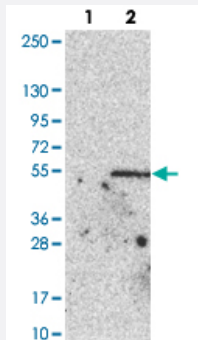


PARS2 polyclonal antibody

Catalog # PAB22128 Size 100 uL

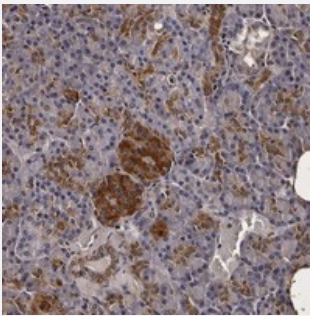
Applications



Western Blot (Transfected lysate)

Western blot analysis of Lane 1: Negative control (vector only transfected HEK293T lysate).

Lane 2: Over-expression lysate (Co-expressed with a C-terminal myc-DDK tag (~3.1 kDa) in mammalian HEK293T cells with PARS2 polyclonal antibody (Cat # PAB22128).



Immunohistochemistry (Formalin/PFA-fixed paraffin-embedded sections)

Immunohistochemical staining of human pancreas with PARS2 polyclonal antibody (Cat # PAB22128) shows strong cytoplasmic positivity in islet cells and intercalated ducts.

Specification

Product Description	Rabbit polyclonal antibody raised against recombinant PARS2.
Immunogen	Recombinant protein corresponding to amino acids of human PARS2.
Sequence	QLPVDIGEDRLAICPRCSFSANMETLDLSQMNCPCACQGGLTKTKGIEVGHTFYLGTKYSSIFNAQFTNVCGKPTLAE
Host	Rabbit
Reactivity	Human
Form	Liquid

Purification	Antigen affinity purification
Isotype	IgG
Recommend Usage	Immunohistochemistry (1:20-1:50) The optimal working dilution should be determined by the end user.
Storage Buffer	In PBS, pH 7.2 (40% glycerol, 0.02% sodium azide)
Storage Instruction	Store at 4°C. For long term storage store at -20°C. Aliquot to avoid repeated freezing and thawing.
Note	This product contains sodium azide: a POISONOUS AND HAZARDOUS SUBSTANCE which should be handled by trained staff only.

Applications

- Western Blot (Transfected lysate)

Western blot analysis of Lane 1: Negative control (vector only transfected HEK293T lysate).

Lane 2: Over-expression lysate (Co-expressed with a C-terminal myc-DDK tag (~3.1 kDa) in mammalian HEK293T cells with PARS2 polyclonal antibody (Cat # PAB22128).

- Immunohistochemistry (Formalin/PFA-fixed paraffin-embedded sections)

Immunohistochemical staining of human pancreas with PARS2 polyclonal antibody (Cat # PAB22128) shows strong cytoplasmic positivity in islet cells and intercalated ducts.

Gene Info — PARS2

Entrez GeneID	25973
Protein Accession#	Q7L3T8
Gene Name	PARS2
Gene Alias	DKFZp727A071, MGC14416, MGC19467, MT-PRORS
Gene Description	prolyl-tRNA synthetase 2, mitochondrial (putative)
Gene Ontology	Hyperlink
Gene Summary	O
Other Designations	OTTHUMP00000011559 proline tRNA ligase 2, mitochondrial (putative) prolyl-tRNA synthetase (mitochondrial)(putative) prolyl-tRNA synthetase, mitochondrial (putative)

Pathway

- [Aminoacyl-tRNA biosynthesis](#)