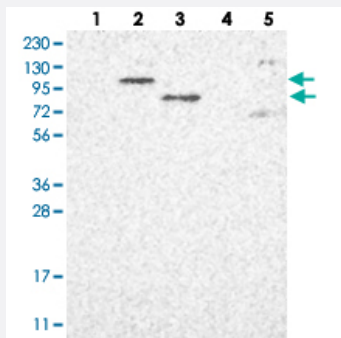


# PARP10 polyclonal antibody

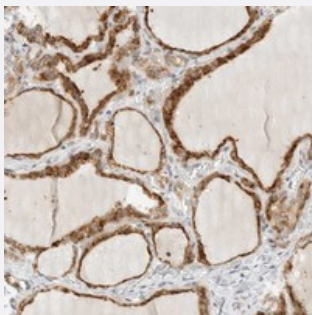
Catalog # PAB22109      Size 100 uL

## Applications



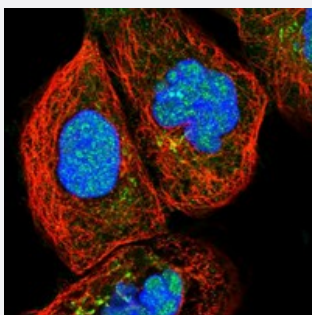
### Western Blot

Western blot analysis of Lane 1: RT-4, Lane 2: U-251 MG, Lane 3: Human Plasma, Lane 4: Liver, Lane 5: Tonsil with PARP10 polyclonal antibody (Cat # PAB22109) at 1:250-1:500 dilution.



### Immunohistochemistry (Formalin/PFA-fixed paraffin-embedded sections)

Immunohistochemical staining of human thyroid gland with PARP10 polyclonal antibody (Cat # PAB22109) shows distinct cytoplasmic positivity in glandular cells at 1:20-1:50 dilution.



### Immunofluorescence

Immunofluorescent staining of human cell line A-431 with PARP10 polyclonal antibody (Cat # PAB22109) at 1-4 ug/mL dilution shows positivity in nucleus but not nucleoli and golgi apparatus.

## Specification

### Product Description

Rabbit polyclonal antibody raised against recombinant PARP10.

### Immunogen

Recombinant protein corresponding to amino acids of human PARP10.

Sequence	PHYDILEPEELAENTSGGDHPSTQGPRATKHALLRGTGGLVTALQGAGTVMGSGEEPGQSGTSL RTGPMVQGRGIMTTGSGQEPPGQSGTSL
Host	Rabbit
Reactivity	Human
Form	Liquid
Purification	Antigen affinity purification
Isotype	IgG
Recommend Usage	Immunohistochemistry (1:20-1:50) Western Blot (1:250-1:500) Immunofluorescence (1-4 ug/mL) The optimal working dilution should be determined by the end user.
Storage Buffer	In PBS, pH 7.2 (40% glycerol, 0.02% sodium azide)
Storage Instruction	Store at 4°C. For long term storage store at -20°C. Aliquot to avoid repeated freezing and thawing.
Note	This product contains sodium azide: a POISONOUS AND HAZARDOUS SUBSTANCE which should be handled by trained staff only.

## Applications

- Western Blot

Western blot analysis of Lane 1: RT-4, Lane 2: U-251 MG, Lane 3: Human Plasma, Lane 4: Liver, Lane 5: Tonsil with PARP10 polyclonal antibody (Cat # PAB22109) at 1:250-1:500 dilution.

- Immunohistochemistry (Formalin/PFA-fixed paraffin-embedded sections)

Immunohistochemical staining of human thyroid gland with PARP10 polyclonal antibody (Cat # PAB22109) shows distinct cytoplasmic positivity in glandular cells at 1:20-1:50 dilution.

- Immunofluorescence

Immunofluorescent staining of human cell line A-431 with PARP10 polyclonal antibody (Cat # PAB22109) at 1-4 ug/mL dilution shows positivity in nucleus but not nucleoli and golgi apparatus.

## Gene Info — PARP10

Entrez GeneID [84875](#)

Protein Accession# [Q53GL7](#)

Gene Name	PARP10
Gene Alias	FLJ14464
Gene Description	poly (ADP-ribose) polymerase family, member 10
Omim ID	<a href="#">609564</a>
Gene Ontology	<a href="#">Hyperlink</a>
Gene Summary	Poly(ADP-ribose) polymerases (PARPs), such as PARP10, regulate gene transcription by altering chromatin organization by adding ADP-ribose to histones. PARPs can also function as transcriptional cofactors (Yu et al., 2005 [PubMed 15674325]).[supplied by OMIM]
Other Designations	-