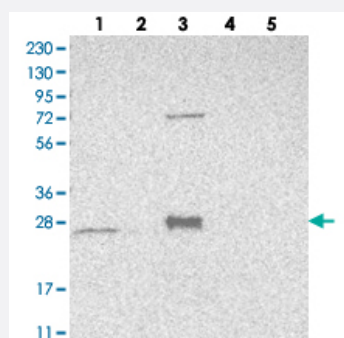


# MRPS15 polyclonal antibody

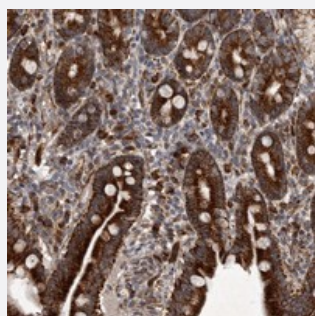
Catalog # PAB22107      Size 100 uL

## Applications



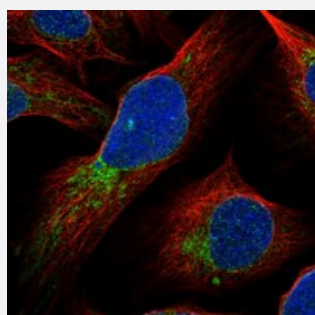
### Western Blot

Western blot analysis of Lane 1: RT-4, Lane 2: U-251 MG, Lane 3: Human Plasma, Lane 4: Liver, Lane 5: Tonsil with MRPS15 polyclonal antibody (Cat # PAB22107) at 1:250-1:500 dilution.



### Immunohistochemistry (Formalin/PFA-fixed paraffin-embedded sections)

Immunohistochemical staining of human duodenum with MRPS15 polyclonal antibody (Cat # PAB22107) strong cytoplasmic positivity in glandular cells at 1:20-1:50 dilution.



### Immunofluorescence

Immunofluorescent staining of human cell line U-2 OS with MRPS15 polyclonal antibody (Cat # PAB22107) at 1-4 ug/mL dilution shows positivity in nuclear membrane and mitochondria.

## Specification

### Product Description

Rabbit polyclonal antibody raised against recombinant MRPS15.

### Immunogen

Recombinant protein corresponding to amino acids of human MRPS15.

|                     |  |
|---------------------|--|
| Sequence            | GLGIEYTFPPLYRRAHRRFVTKKALCIRVFQETQKLKKRRRALKAAAAAQKQAKRRNPDSPAKAI<br>PKTLKDS   |
| Host                | Rabbit   |
| Reactivity          | Human  |
| Form                | Liquid   |
| Purification        | Antigen affinity purification  |
| Isotype             | IgG  |
| Recommend Usage     | Immunohistochemistry (1:20-1:50)<br>Western Blot (1:250-1:500)<br>Immunofluorescence (1-4 ug/mL)<br>The optimal working dilution should be determined by the end user. |
| Storage Buffer      | In PBS, pH 7.2 (40% glycerol, 0.02% sodium azide)  |
| Storage Instruction | Store at 4°C. For long term storage store at -20°C.<br>Aliquot to avoid repeated freezing and thawing.   |
| Note                | This product contains sodium azide: a POISONOUS AND HAZARDOUS SUBSTANCE which should be handled by trained staff only.   |

## Applications

- Western Blot

Western blot analysis of Lane 1: RT-4, Lane 2: U-251 MG, Lane 3: Human Plasma, Lane 4: Liver, Lane 5: Tonsil with MRPS15 polyclonal antibody (Cat # PAB22107) at 1:250-1:500 dilution.

- Immunohistochemistry (Formalin/PFA-fixed paraffin-embedded sections)

Immunohistochemical staining of human duodenum with MRPS15 polyclonal antibody (Cat # PAB22107) strong cytoplasmic positivity in glandular cells at 1:20-1:50 dilution.

- Immunofluorescence

Immunofluorescent staining of human cell line U-2 OS with MRPS15 polyclonal antibody (Cat # PAB22107) at 1-4 ug/mL dilution shows positivity in nuclear membrane and mitochondria.

## Gene Info — MRPS15

Entrez GeneID [64960](#)

Protein Accession# [P82914](#)

|                    |  |
|--------------------|--|
| Gene Name          | MRPS15   |
| Gene Alias         | DC37, FLJ11564, MPR-S15, RPMS15, S15mt   |
| Gene Description   | mitochondrial ribosomal protein S15  |
| Gene Ontology      | <a href="#">Hyperlink</a>  |
| Gene Summary       | <p>Mammalian mitochondrial ribosomal proteins are encoded by nuclear genes and help in protein synthesis within the mitochondrion. Mitochondrial ribosomes (mitoribosomes) consist of a small 28S subunit and a large 39S subunit. They have an estimated 75% protein to rRNA composition compared to prokaryotic ribosomes, where this ratio is reversed. Another difference between mammalian mitoribosomes and prokaryotic ribosomes is that the latter contain a 5S rRNA. Among different species, the proteins comprising the mitoribosome differ greatly in sequence, and sometimes in biochemical properties, which prevents easy recognition by sequence homology. This gene encodes a 28S subunit protein that belongs to the ribosomal protein S15P family. The encoded protein is more than two times the size of its E. coli counterpart, with the 12S rRNA binding sites conserved. Between human and mouse, the encoded protein is the least conserved among small subunit ribosomal proteins. Pseudogenes corresponding to this gene are found on chromosomes 15q and 19q. [provided by RefSeq]</p> |
| Other Designations | 28S ribosomal protein S15, mitochondrial OTTHUMP00000009727  |