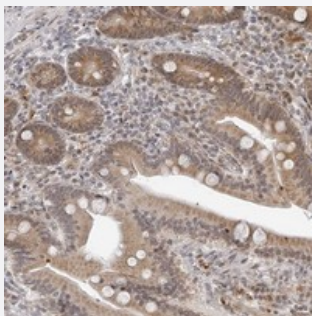


# ODF2L polyclonal antibody

Catalog # PAB22106      Size 100 uL

## Applications



### Immunohistochemistry (Formalin/PFA-fixed paraffin-embedded sections)

Immunohistochemical staining of human duodenum with ODF2L polyclonal antibody (Cat # PAB22106) shows moderate cytoplasmic positivity in glandular cells at 1:50-1:200 dilution.

## Specification

Product Description	Rabbit polyclonal antibody raised against recombinant ODF2L.
Immunogen	Recombinant protein corresponding to amino acids of human ODF2L.
Sequence	SVKVVHERLQIQIHKREAENDKLKEYVKSLETKIAKWNLQSRMNKNEAIVMKEASRQKTVALKKAS KVYKQRLDHFTGAIE
Host	Rabbit
Reactivity	Human
Form	Liquid
Purification	Antigen affinity purification
Isotype	IgG
Recommend Usage	Immunohistochemistry (1:50-1:200) The optimal working dilution should be determined by the end user.
Storage Buffer	In PBS, pH 7.2 (40% glycerol, 0.02% sodium azide)

**Storage Instruction**

Store at 4°C. For long term storage store at -20°C.  
Aliquot to avoid repeated freezing and thawing.

**Note**

This product contains sodium azide: a POISONOUS AND HAZARDOUS SUBSTANCE which should be handled by trained staff only.

## Applications

- Immunohistochemistry (Formalin/PFA-fixed paraffin-embedded sections)

Immunohistochemical staining of human duodenum with ODF2L polyclonal antibody (Cat # PAB22106) shows moderate cytoplasmic positivity in glandular cells at 1:50-1:200 dilution.

## Gene Info — ODF2L

**Entrez GeneID**[57489](#)**Protein Accession#**[Q9ULJ1](#)**Gene Name**

ODF2L

**Gene Alias**

KIAA1229, MGC111060, RP5-977L11.1, dJ977L11.1

**Gene Description**

outer dense fiber of sperm tails 2-like

**Gene Ontology**[Hyperlink](#)**Other Designations**

-