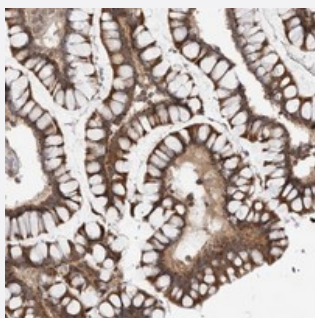


CCDC18 polyclonal antibody

Catalog # PAB22096 Size 100 uL

Applications



Immunohistochemistry (Formalin/PFA-fixed paraffin-embedded sections)

Immunohistochemical staining of human colon with CCDC18 polyclonal antibody (Cat # PAB22096) strong cytoplasmic positivity in glandular cells.

Specification

Product Description	Rabbit polyclonal antibody raised against recombinant CCDC18.
Immunogen	Recombinant protein corresponding to amino acids of human CCDC18.
Sequence	HQVESVKDQNQHTMKNQYEKERQRLVTGIEELRTKLIQIEAENSDLKVNMAHRTSQFQLIQEELLE KASNSSKLESEMTKKCSQLLTLEKQLEEKI
Host	Rabbit
Reactivity	Human
Form	Liquid
Purification	Antigen affinity purification
Isotype	IgG
Recommend Usage	Immunohistochemistry (1:20-1:50) The optimal working dilution should be determined by the end user.
Storage Buffer	In PBS, pH 7.2 (40% glycerol, 0.02% sodium azide)

Storage Instruction

Store at 4°C. For long term storage store at -20°C.
Aliquot to avoid repeated freezing and thawing.

Note

This product contains sodium azide: a POISONOUS AND HAZARDOUS SUBSTANCE which should be handled by trained staff only.

Applications

- Immunohistochemistry (Formalin/PFA-fixed paraffin-embedded sections)

Immunohistochemical staining of human colon with CCDC18 polyclonal antibody (Cat # PAB22096) strong cytoplasmic positivity in glandular cells.

Gene Info — CCDC18

Entrez GeneID[343099](#)**Protein Accession#**[Q5T9S5](#)**Gene Name**

CCDC18

Gene Alias

NY-SAR-41, RP4-717I23.1, dJ717I23.1

Gene Description

coiled-coil domain containing 18

Gene Ontology[Hyperlink](#)**Other Designations**

sarcoma antigen NY-SAR-24|sarcoma antigen NY-SAR-41