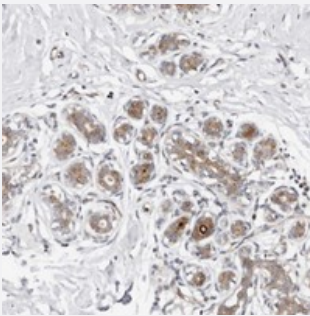


ODF2L polyclonal antibody

Catalog # PAB22095 Size 100 uL

Applications



Immunohistochemistry (Formalin/PFA-fixed paraffin-embedded sections)

Immunohistochemical staining of human breast with ODF2L polyclonal antibody (Cat # PAB22095) shows moderate cytoplasmic and nuclear positivity combined with staining of luminal membranes in glandular cells at 1:50-1:200 dilution.

Specification

Product Description	Rabbit polyclonal antibody raised against recombinant ODF2L.
Immunogen	Recombinant protein corresponding to amino acids of human ODF2L.
Sequence	LLLPLFKDTIEKINFENANLSALNLKISEQKEILIKELDTFKSVKLALAHLLRKRDKQTGDNLSMMLLENLTDNESENTNLKKKVFEKE
Host	Rabbit
Reactivity	Human
Form	Liquid
Purification	Antigen affinity purification
Isotype	IgG
Recommend Usage	Immunohistochemistry (1:50-1:200) The optimal working dilution should be determined by the end user.
Storage Buffer	In PBS, pH 7.2 (40% glycerol, 0.02% sodium azide)

Storage Instruction

Store at 4°C. For long term storage store at -20°C.
Aliquot to avoid repeated freezing and thawing.

Note

This product contains sodium azide: a POISONOUS AND HAZARDOUS SUBSTANCE which should be handled by trained staff only.

Applications

- Immunohistochemistry (Formalin/PFA-fixed paraffin-embedded sections)

Immunohistochemical staining of human breast with ODF2L polyclonal antibody (Cat # PAB22095) shows moderate cytoplasmic and nuclear positivity combined with staining of luminal membranes in glandular cells at 1:50-1:200 dilution.

Gene Info — ODF2L

Entrez GeneID[57489](#)**Protein Accession#**[Q9ULJ1](#)**Gene Name**

ODF2L

Gene Alias

KIAA1229, MGC111060, RP5-977L11.1, dJ977L11.1

Gene Description

outer dense fiber of sperm tails 2-like

Gene Ontology[Hyperlink](#)**Other Designations**

-