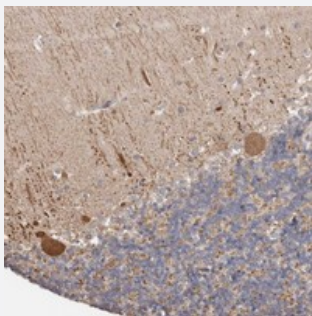


DOPEY1 polyclonal antibody

Catalog # PAB22084 Size 100 uL

Applications



Immunohistochemistry (Formalin/PFA-fixed paraffin-embedded sections)

Immunohistochemical staining of human cerebellum with DOPEY1 polyclonal antibody (Cat # PAB22084) shows cytoplasmic and nuclear positivity in purkinje cells.

Specification

Product Description	Rabbit polyclonal antibody raised against recombinant DOPEY1.
Immunogen	Recombinant protein corresponding to amino acids of human DOPEY1.
Sequence	KLETDCEHVQPPQWLQTLMNACSQASDFSVQSV AISLVMDLVGLTQSVAMVTGENINSVEPAQP LSPNQGRVAVVIRPPLTQGNL
Host	Rabbit
Reactivity	Human
Form	Liquid
Purification	Antigen affinity purification
Isotype	IgG
Recommend Usage	Immunohistochemistry (1:10-1:20) The optimal working dilution should be determined by the end user.
Storage Buffer	In PBS, pH 7.2 (40% glycerol, 0.02% sodium azide)

Storage Instruction

Store at 4°C. For long term storage store at -20°C.
Aliquot to avoid repeated freezing and thawing.

Note

This product contains sodium azide: a POISONOUS AND HAZARDOUS SUBSTANCE which should be handled by trained staff only.

Applications

- Immunohistochemistry (Formalin/PFA-fixed paraffin-embedded sections)

Immunohistochemical staining of human cerebellum with DOPEY1 polyclonal antibody (Cat # PAB22084) shows cytoplasmic and nuclear positivity in purkinje cells.

Gene Info — DOPEY1

Entrez GeneID[23033](#)**Protein Accession#**[Q5JWR5](#)**Gene Name**

DOPEY1

Gene Alias

FLJ35610, KIAA1117, dJ202D23.2

Gene Description

dopey family member 1

Gene Ontology[Hyperlink](#)**Other Designations**

OTTHUMP00000017984|OTTHUMP00000040564|homolog of yeast DOP1