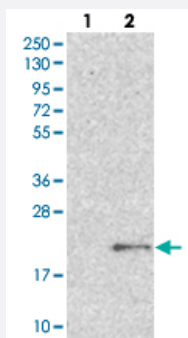


PNRC2 polyclonal antibody

Catalog # PAB22077

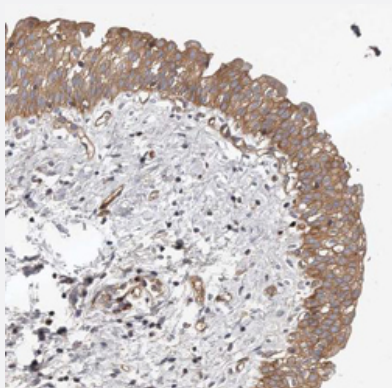
Size 100 uL

Applications



Western Blot (Transfected lysate)

Western blot analysis of Lane 1: Control (vector only transfected HEK293T lysate), Lane 2: PNRC2 over-expression lysate (Co-expressed with a C-terminal myc-DDK tag (~3.1 kDa) in mammalian HEK293T cells.



Immunohistochemistry (Formalin/PFA-fixed paraffin-embedded sections)

Immunohistochemical staining of human urinary bladder shows cytoplasmic and membranous positivity in urothelial cells.

Specification

Product Description	Rabbit polyclonal antibody raised against recombinant PNRC2.
Immunogen	Recombinant protein corresponding to amino acids of human PNRC2.
Sequence	NNQSWNSSLSGPRLLFKFSQANQNYAGAKFSEPPSPSVLPKPPSHWVPVSFNPSPDKEIMTFQLK
Host	Rabbit
Reactivity	Human
Form	Liquid

Purification	Antigen affinity purification
Isotype	IgG
Recommend Usage	Immunohistochemistry (1:200-1:500) Western Blot (0.04-0.4 ug/mL) The optimal working dilution should be determined by the end user.
Storage Buffer	In PBS, pH 7.2 (40% glycerol, 0.02% sodium azide).
Storage Instruction	Store at 4°C. For long term storage store at -20°C. Aliquot to avoid repeated freezing and thawing.
Note	This product contains sodium azide: a POISONOUS AND HAZARDOUS SUBSTANCE which should be handled by trained staff only.

Applications

- Western Blot (Transfected lysate)

Western blot analysis of Lane 1: Control (vector only transfected HEK293T lysate), Lane 2: PNRC2 over-expression lysate (Co-expressed with a C-terminal myc-DDK tag (~3.1 kDa) in mammalian HEK293T cells.

- Immunohistochemistry (Formalin/PFA-fixed paraffin-embedded sections)

Immunohistochemical staining of human urinary bladder shows cytoplasmic and membranous positivity in urothelial cells.

Gene Info — PNRC2

Entrez GeneID	55629
Protein Accession#	Q9NPJ4
Gene Name	PNRC2
Gene Alias	FLJ20312, MGC99541
Gene Description	proline-rich nuclear receptor coactivator 2
Gene Ontology	Hyperlink
Other Designations	OTTHUMP00000015770 OTTHUMP00000015771