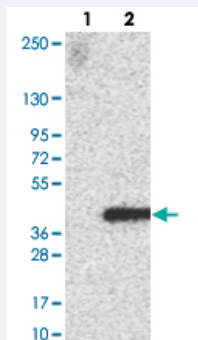


FAM212B polyclonal antibody

Catalog # PAB22075 Size 100 uL

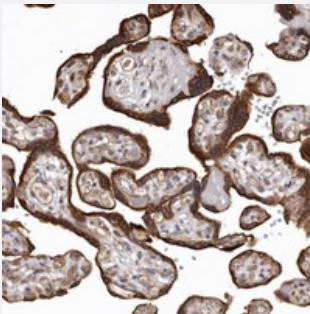
Applications



Western Blot (Transfected lysate)

Western blot analysis of Lane 1: Negative control (vector only transfected HEK293T lysate).

Lane 2: Over-expression lysate (Co-expressed with a C-terminal myc-DDK tag (~3.1 kDa) in mammalian HEK293T cells with FAM212B polyclonal antibody (Cat # PAB22075).



Immunohistochemistry (Formalin/PFA-fixed paraffin-embedded sections)

Immunohistochemical staining of human placenta with FAM212B polyclonal antibody (Cat # PAB22075) shows strong cytoplasmic positivity in trophoblastic cells.

Specification

Product Description	Rabbit polyclonal antibody raised against recombinant FAM212B.
Immunogen	Recombinant protein corresponding to amino acids of human FAM212B.
Sequence	EHPCWEGGRGPARTVCSPSSQPSLGSSSTKFPShRSVCGRDLAPLPRTQPHQSCAQGGPERV EPDDWTSTLMSR
Host	Rabbit
Reactivity	Human
Form	Liquid

Purification	Antigen affinity purification
Isotype	IgG
Recommend Usage	Immunohistochemistry (1:10-1:20) The optimal working dilution should be determined by the end user.
Storage Buffer	In PBS, pH 7.2 (40% glycerol, 0.02% sodium azide)
Storage Instruction	Store at 4°C. For long term storage store at -20°C. Aliquot to avoid repeated freezing and thawing.
Note	This product contains sodium azide: a POISONOUS AND HAZARDOUS SUBSTANCE which should be handled by trained staff only.

Applications

- Western Blot (Transfected lysate)

Western blot analysis of Lane 1: Negative control (vector only transfected HEK293T lysate).

Lane 2: Over-expression lysate (Co-expressed with a C-terminal myc-DDK tag (~3.1 kDa) in mammalian HEK293T cells with FAM212B polyclonal antibody (Cat # PAB22075).

- Immunohistochemistry (Formalin/PFA-fixed paraffin-embedded sections)

Immunohistochemical staining of human placenta with FAM212B polyclonal antibody (Cat # PAB22075) shows strong cytoplasmic positivity in trophoblastic cells.

Gene Info — FAM212B

Entrez GeneID	55924
Protein Accession#	Q9NTI7
Gene Name	FAM212B
Gene Alias	C1orf183
Gene Description	family with sequence similarity 212, member B
Gene Ontology	Hyperlink
Gene Summary	protein FAM212B; uncharacterized protein C1orf183
Other Designations	protein FAM212B; uncharacterized protein C1orf183

Disease

- [Carcinoma](#)
- [Genetic Predisposition to Disease](#)
- [Kidney Neoplasms](#)
- [Mouth Neoplasms](#)
- [Precancerous Conditions](#)