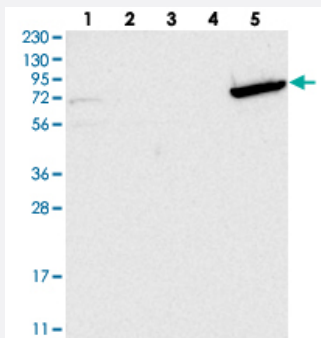


# GBP6 polyclonal antibody

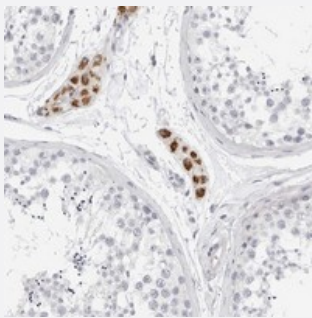
Catalog # PAB22067      Size 100 uL

## Applications



### Western Blot

Western blot analysis of Lane 1: RT-4, Lane 2: U-251 MG, Lane 3: Human Plasma, Lane 4: Liver, Lane 5: Tonsil with GBP6 polyclonal antibody (Cat # PAB22067).



### Immunohistochemistry (Formalin/PFA-fixed paraffin-embedded sections)

Immunohistochemical staining of human testis with GBP6 polyclonal antibody (Cat # PAB22067) shows strong cytoplasmic positivity in Leydig cells.

## Specification

|                            |  |
|----------------------------|--|
| <b>Product Description</b> | Rabbit polyclonal antibody raised against recombinant GBP6.                              |
| <b>Immunogen</b>           | Recombinant protein corresponding to amino acids of human GBP6.                          |
| <b>Sequence</b>            | EREHLLREQIMMLEHTQKVQNDWLHEGFKKKYEEMNAEISQFKRMDTTKNDDTPWIARTLDNLA<br>DELTAISAPAKLIGHGVKGV |
| <b>Host</b>                | Rabbit   |
| <b>Reactivity</b>          | Human  |
| <b>Form</b>                | Liquid   |

|                     |  |
|---------------------|--|
| Purification        | Antigen affinity purification  |
| Isotype             | IgG  |
| Recommend Usage     | Immunohistochemistry (1:200-1:500)<br>Western Blot (1:250-1:500)<br>The optimal working dilution should be determined by the end user. |
| Storage Buffer      | In PBS, pH 7.2 (40% glycerol, 0.02% sodium azide)  |
| Storage Instruction | Store at 4°C. For long term storage store at -20°C.<br>Aliquot to avoid repeated freezing and thawing.                                 |
| Note                | This product contains sodium azide: a POISONOUS AND HAZARDOUS SUBSTANCE which should be handled by trained staff only.                 |

## Applications

- Western Blot

Western blot analysis of Lane 1: RT-4, Lane 2: U-251 MG, Lane 3: Human Plasma, Lane 4: Liver, Lane 5: Tonsil with GBP6 polyclonal antibody (Cat # PAB22067).

- Immunohistochemistry (Formalin/PFA-fixed paraffin-embedded sections)

Immunohistochemical staining of human testis with GBP6 polyclonal antibody (Cat # PAB22067) shows strong cytoplasmic positivity in Leydig cells.

## Gene Info — GBP6

|                    |   |
|--------------------|---|
| Entrez GeneID      | <a href="#">163351</a>  |
| Protein Accession# | <a href="#">Q6ZN66</a>  |
| Gene Name          | GBP6  |
| Gene Alias         | DKFZp686G0786, FLJ39135   |
| Gene Description   | guanylate binding protein family, member 6  |
| Gene Ontology      | <a href="#">Hyperlink</a>   |
| Gene Summary       | Guanylate-binding proteins, such as GBP6, are induced by interferon and hydrolyze GTP to both GDP and GMP (Olszewski et al., 2006 [PubMed 16689661]).[supplied by OMIM] |
| Other Designations | OTTHUMP00000011819  |

## Disease

- [Arthritis](#)
- [Genetic Predisposition to Disease](#)