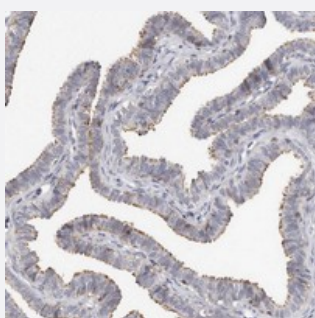


KIF26B polyclonal antibody

Catalog # PAB22063 Size 100 uL

Applications



Immunohistochemistry (Formalin/PFA-fixed paraffin-embedded sections)

Immunohistochemical staining of human fallopian tube with KIF26B polyclonal antibody (Cat # PAB22063) shows distinct positivity in ciliated cells at 1:50-1:200 dilution.

Specification

Product Description	Rabbit polyclonal antibody raised against recombinant KIF26B.
Immunogen	Recombinant protein corresponding to amino acids of human KIF26B.
Sequence	GIGTSSPGSLGGSPGFGTGSPGSGSGGGSSPGSDRGVWCENCNARLVELKRQALRLLLP
Host	Rabbit
Reactivity	Human
Form	Liquid
Purification	Antigen affinity purification
Isotype	IgG
Recommend Usage	Immunohistochemistry (1:50-1:200) The optimal working dilution should be determined by the end user.
Storage Buffer	In PBS, pH 7.2 (40% glycerol, 0.02% sodium azide)
Storage Instruction	Store at 4°C. For long term storage store at -20°C. Aliquot to avoid repeated freezing and thawing.

Note

This product contains sodium azide: a POISONOUS AND HAZARDOUS SUBSTANCE which should be handled by trained staff only.

Applications

- Immunohistochemistry (Formalin/PFA-fixed paraffin-embedded sections)

Immunohistochemical staining of human fallopian tube with KIF26B polyclonal antibody (Cat # PAB22063) shows distinct positivity in ciliated cells at 1:50-1:200 dilution.

Gene Info — KIF26B

Entrez GeneID [55083](#)

Protein Accession# [Q2KJY2](#)

Gene Name KIF26B

Gene Alias FLJ10157, MGC35030

Gene Description kinesin family member 26B

Gene Ontology [Hyperlink](#)

Other Designations -

Disease

- [Tobacco Use Disorder](#)