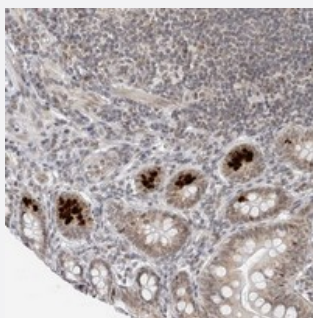


# TOX4 polyclonal antibody

Catalog # PAB22051      Size 100 uL

## Applications



### Immunohistochemistry (Formalin/PFA-fixed paraffin-embedded sections)

Immunohistochemical staining of human small intestine with TOX4 polyclonal antibody (Cat # PAB22051) shows strong cytoplasmic positivity in paneth cells.

## Specification

Product Description	Rabbit polyclonal antibody raised against recombinant TOX4.
Immunogen	Recombinant protein corresponding to amino acids of human TOX4.
Sequence	PMATVDPASPAPASIEPPALSPSIVVNSTLSSYVANQASSGAGGQPNITKLITKQMLPSSITMSQG GMVTVIPATVVTSRGLQLGQTSTATIQPSQQAQIVTRSVLQAAAAAAAAASMLPPLPRLQPPPLQ QMPQPPTQQQVTI
Host	Rabbit
Reactivity	Human
Form	Liquid
Purification	Antigen affinity purification
Isotype	IgG
Recommend Usage	Immunohistochemistry (1:20-1:50) The optimal working dilution should be determined by the end user.
Storage Buffer	In PBS, pH 7.2 (40% glycerol, 0.02% sodium azide)

**Storage Instruction**

Store at 4°C. For long term storage store at -20°C.  
Aliquot to avoid repeated freezing and thawing.

**Note**

This product contains sodium azide: a POISONOUS AND HAZARDOUS SUBSTANCE which should be handled by trained staff only.

## Applications

- Immunohistochemistry (Formalin/PFA-fixed paraffin-embedded sections)

Immunohistochemical staining of human small intestine with TOX4 polyclonal antibody (Cat # PAB22051) shows strong cytoplasmic positivity in paneth cells.

## Gene Info — TOX4

**Entrez GeneID**[9878](#)**Protein Accession#**[O94842](#)**Gene Name**

TOX4

**Gene Alias**

C14orf92, KIAA0737, LCP1, MIG7

**Gene Description**

TOX high mobility group box family member 4

**Gene Ontology**[Hyperlink](#)**Other Designations**

epidermal Langerhans cell protein LCP1|migration-inducing protein 7