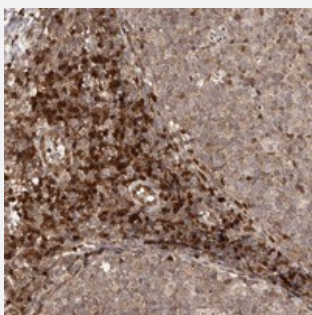


# CDC42SE1 polyclonal antibody

Catalog # PAB22049      Size 100 uL

## Applications



### Immunohistochemistry (Formalin/PFA-fixed paraffin-embedded sections)

Immunohistochemical staining of human tonsil with CDC42SE1 polyclonal antibody (Cat # PAB22049) shows strong nuclear positivity in lymphoid cells outside reaction centra at 1:50-1:200 dilution.

## Specification

<b>Product Description</b>	Rabbit polyclonal antibody raised against recombinant CDC42SE1.
<b>Immunogen</b>	Recombinant protein corresponding to amino acids of human CDC42SE1.
<b>Sequence</b>	LGCCVVEKPQPKKKRRRIDRTMIGEP MNFVHLTHIGSGEMGAGDGLAMTGAVQEQMR SKGNR
<b>Host</b>	Rabbit
<b>Reactivity</b>	Human
<b>Form</b>	Liquid
<b>Purification</b>	Antigen affinity purification
<b>Isotype</b>	IgG
<b>Recommend Usage</b>	Immunohistochemistry (1:50-1:200) The optimal working dilution should be determined by the end user.
<b>Storage Buffer</b>	In PBS, pH 7.2 (40% glycerol, 0.02% sodium azide)
<b>Storage Instruction</b>	Store at 4°C. For long term storage store at -20°C. Aliquot to avoid repeated freezing and thawing.

**Note**

This product contains sodium azide: a POISONOUS AND HAZARDOUS SUBSTANCE which should be handled by trained staff only.

## Applications

- Immunohistochemistry (Formalin/PFA-fixed paraffin-embedded sections)

Immunohistochemical staining of human tonsil with CDC42SE1 polyclonal antibody (Cat # PAB22049) shows strong nuclear positivity in lymphoid cells outside reaction centra at 1:50-1:200 dilution.

## Gene Info — CDC42SE1

Entrez GeneID	<a href="#">56882</a>
Protein Accession#	<a href="#">Q9NRR8</a>
Gene Name	CDC42SE1
Gene Alias	SCIP1, SPEC1
Gene Description	CDC42 small effector 1
Gene Ontology	<a href="#">Hyperlink</a>
Other Designations	1300002M12Rik OTTHUMP00000033118 signaling molecule SPEC1 beta small protein effector 1 of Cdc42