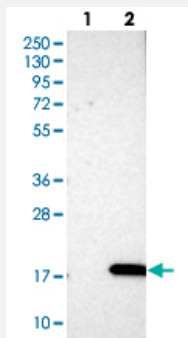


PHLDA3 polyclonal antibody

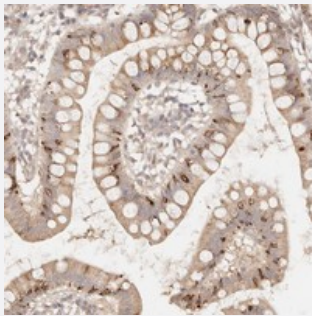
Catalog # PAB22046 Size 100 uL

Applications



Western Blot (Transfected lysate)

Western blot analysis of Lane 1: Negative control (vector only transfected HEK293T lysate), Lane 2: Over-expression Lysate (Co-expressed with a C-terminal myc-DDK tag (~3.1 kDa) in mammalian HEK293T cells) with PHLDA3 polyclonal antibody (Cat # PAB22046).



Immunohistochemistry (Formalin/PFA-fixed paraffin-embedded sections)

Immunohistochemical staining of human small intestine with PHLDA3 polyclonal antibody (Cat # PAB22046) shows generally weak positivity in glandular cells but goblet cells were stronger stained.

Specification

Product Description	Rabbit polyclonal antibody raised against recombinant PHLDA3.
Immunogen	Recombinant protein corresponding to amino acids of human PHLDA3.
Sequence	LWKRKRCVLTERGLQLFEAKGTGGRPKELSFARIKAVECVESTGRHIYFTLVTEGGGEIDFRCPLE DPGWNAQITLGLVKFKNQQAQTVR
Host	Rabbit
Reactivity	Human
Form	Liquid

Purification	Antigen affinity purification
Isotype	IgG
Recommend Usage	Immunohistochemistry (1:10-1:20) Western Blot (1:250-1:500) The optimal working dilution should be determined by the end user.
Storage Buffer	In PBS, pH 7.2 (40% glycerol, 0.02% sodium azide)
Storage Instruction	Store at 4°C. For long term storage store at -20°C. Aliquot to avoid repeated freezing and thawing.
Note	This product contains sodium azide: a POISONOUS AND HAZARDOUS SUBSTANCE which should be handled by trained staff only.

Applications

- Western Blot (Transfected lysate)

Western blot analysis of Lane 1: Negative control (vector only transfected HEK293T lysate), Lane 2: Over-expression Lysate (Co-expressed with a C-terminal myc-DDK tag (~3.1 kDa) in mammalian HEK293T cells) with PHLDA3 polyclonal antibody (Cat # PAB22046).

- Immunohistochemistry (Formalin/PFA-fixed paraffin-embedded sections)

Immunohistochemical staining of human small intestine with PHLDA3 polyclonal antibody (Cat # PAB22046) shows generally weak positivity in glandular cells but goblet cells were stronger stained.

Gene Info — PHLDA3

Entrez GeneID	23612
Protein Accession#	Q9Y5J5
Gene Name	PHLDA3
Gene Alias	TIH1
Gene Description	pleckstrin homology-like domain, family A, member 3
Omim ID	607054
Gene Ontology	Hyperlink
Gene Summary	family A

Other Designations

OTTHUMP00000033919|OTTHUMP00000033920|pleckstrin homology-like domain, family A, member 2
