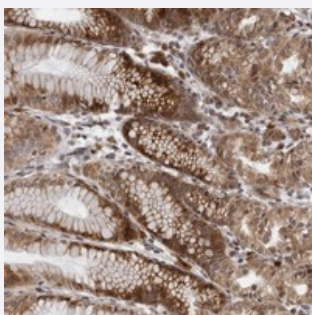


C1orf150 polyclonal antibody

Catalog # PAB22043 Size 100 uL

Applications



Immunohistochemistry (Formalin/PFA-fixed paraffin-embedded sections)

Immunohistochemical staining of human stomach with C1orf150 polyclonal antibody (Cat # PAB22043) shows strong cytoplasmic and nuclear positivity in glandular cells at 1:500-1:1000 dilution.

Specification

Product Description	Rabbit polyclonal antibody raised against recombinant C1orf150.
Immunogen	Recombinant protein corresponding to amino acids of human C1orf150.
Sequence	MGNYLRLKLSCLGENQKKPKKGNPDEERKRQEMTTFERKLQDQDKKSQEVSSSTSNQENENGSGSEEV
Host	Rabbit
Reactivity	Human
Form	Liquid
Purification	Antigen affinity purification
Isotype	IgG
Recommend Usage	Immunohistochemistry (1:500-1:1000) The optimal working dilution should be determined by the end user.
Storage Buffer	In PBS, pH 7.2 (40% glycerol, 0.02% sodium azide)

Storage Instruction

Store at 4°C. For long term storage store at -20°C.
Aliquot to avoid repeated freezing and thawing.

Note

This product contains sodium azide: a POISONOUS AND HAZARDOUS SUBSTANCE which should be handled by trained staff only.

Applications

- Immunohistochemistry (Formalin/PFA-fixed paraffin-embedded sections)

Immunohistochemical staining of human stomach with C1orf150 polyclonal antibody (Cat # PAB22043) shows strong cytoplasmic and nuclear positivity in glandular cells at 1:500-1:1000 dilution.

Gene Info — C1orf150

Entrez GeneID[148823](#)**Protein Accession#**[Q5JQS6](#)**Gene Name**

C1orf150

Gene Alias

FLJ41804, FLJ44728

Gene Description

chromosome 1 open reading frame 150

Gene Ontology[Hyperlink](#)**Other Designations**

OTTHUMP00000038412|hypothetical protein LOC148823