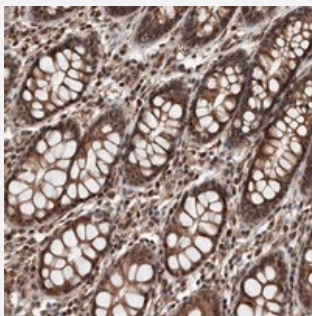


ADAMTS20 polyclonal antibody

Catalog # PAB22038 Size 100 uL

Applications



Immunohistochemistry (Formalin/PFA-fixed paraffin-embedded sections)

Immunohistochemical staining of human rectum with ADAMTS20 polyclonal antibody (Cat # PAB22038) strong cytoplasmic positivity in glandular cells at 1:20-1:50 dilution.

Specification

Product Description	Rabbit polyclonal antibody raised against recombinant ADAMTS20.
Immunogen	Recombinant protein corresponding to amino acids of human ADAMTS20.
Sequence	DWSPCSASC GHGKTTRQVLCMNYHQPIDENYCDPEVRPLMEQECSLAACPPAHSHFPSSPVQ PSYYLSTNLPLTQKLEDNENQVVHPSVRGNQWRTG
Host	Rabbit
Reactivity	Human
Form	Liquid
Purification	Antigen affinity purification
Isotype	IgG
Recommend Usage	Immunohistochemistry (1:20-1:50) The optimal working dilution should be determined by the end user.
Storage Buffer	In PBS, pH 7.2 (40% glycerol, 0.02% sodium azide)

Storage Instruction

Store at 4°C. For long term storage store at -20°C.
Aliquot to avoid repeated freezing and thawing.

Note

This product contains sodium azide: a POISONOUS AND HAZARDOUS SUBSTANCE which should be handled by trained staff only.

Applications

- Immunohistochemistry (Formalin/PFA-fixed paraffin-embedded sections)

Immunohistochemical staining of human rectum with ADAMTS20 polyclonal antibody (Cat # PAB22038) strong cytoplasmic positivity in glandular cells at 1:20-1:50 dilution.

Gene Info — ADAMTS20

Entrez GeneID[80070](#)**Protein Accession#**[P59510](#)**Gene Name**

ADAMTS20

Gene Alias

GON-1

Gene Description

ADAM metallopeptidase with thrombospondin type 1 motif, 20

Gene Ontology[Hyperlink](#)**Gene Summary**

O

Other Designations

a disintegrin-like and metalloprotease (reprolysin type) with thrombospondin type 1 motif, 20|a disintegrin-like and metalloprotease with thrombospondin type 1 motifs 20