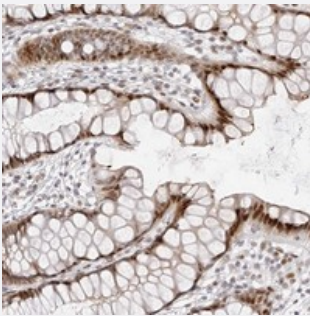


PLEKHG1 polyclonal antibody

Catalog # PAB22021 Size 100 uL

Applications



Immunohistochemistry (Formalin/PFA-fixed paraffin-embedded sections)

Immunohistochemical staining of human rectum with PLEKHG1 polyclonal antibody (Cat # PAB22021) shows strong nuclear positivity in glandular cells at 1:50-1:200 dilution.

Specification

Product Description	Rabbit polyclonal antibody raised against recombinant PLEKHG1.
Immunogen	Recombinant protein corresponding to amino acids of human PLEKHG1.
Sequence	CQDHLYNLSGRKGISAKSQPYHRSQSSSVLINKSMDSINYPDVGKQQLLSLHRSSRCESHQDL LPDIADSHQQGTEKLSDLTLQDSQKVVVVN
Host	Rabbit
Reactivity	Human
Form	Liquid
Purification	Antigen affinity purification
Isotype	IgG
Recommend Usage	Immunohistochemistry (1:50-1:200) The optimal working dilution should be determined by the end user.
Storage Buffer	In PBS, pH 7.2 (40% glycerol, 0.02% sodium azide)

Storage Instruction

Store at 4°C. For long term storage store at -20°C.
Aliquot to avoid repeated freezing and thawing.

Note

This product contains sodium azide: a POISONOUS AND HAZARDOUS SUBSTANCE which should be handled by trained staff only.

Applications

- Immunohistochemistry (Formalin/PFA-fixed paraffin-embedded sections)

Immunohistochemical staining of human rectum with PLEKHG1 polyclonal antibody (Cat # PAB22021) shows strong nuclear positivity in glandular cells at 1:50-1:200 dilution.

Gene Info — PLEKHG1

Entrez GeneID[57480](#)**Protein Accession#**[Q9ULL1](#)**Gene Name**

PLEKHG1

Gene Alias

FLJ31738, KIAA1209

Gene Description

pleckstrin homology domain containing, family G (with RhoGef domain) member 1

Gene Ontology[Hyperlink](#)**Gene Summary**

O

Other Designations

OTTHUMP00000017413

Disease

- [Panic Disorder](#)
- [Tobacco Use Disorder](#)