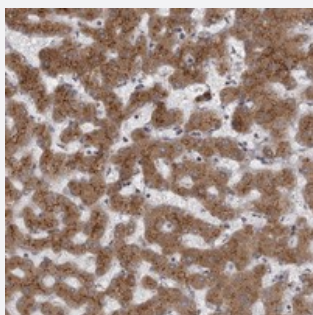


# WDR47 polyclonal antibody

Catalog # PAB22019      Size 100 uL

## Applications



### Immunohistochemistry (Formalin/PFA-fixed paraffin-embedded sections)

Immunohistochemical staining of human liver with WDR47 polyclonal antibody (Cat # PAB22019) shows granular cytoplasmic positivity in hepatocytes at 1:1000-1:2500 dilution.

## Specification

Product Description	Rabbit polyclonal antibody raised against recombinant WDR47.
Immunogen	Recombinant protein corresponding to amino acids of human WDR47.
Sequence	EHSVIKPPLGDSPGSLRSKGEEDDKSKKQFVCINILEDTQAVRAVAFHPAGGLYAVGSNSKTLR VCAYPDVIDPSAHETPKQPVV
Host	Rabbit
Reactivity	Human
Form	Liquid
Purification	Antigen affinity purification
Isotype	IgG
Recommend Usage	Immunohistochemistry (1:1000-1:2500) The optimal working dilution should be determined by the end user.
Storage Buffer	In PBS, pH 7.2 (40% glycerol, 0.02% sodium azide)

**Storage Instruction**

Store at 4°C. For long term storage store at -20°C.  
Aliquot to avoid repeated freezing and thawing.

**Note**

This product contains sodium azide: a POISONOUS AND HAZARDOUS SUBSTANCE which should be handled by trained staff only.

## Applications

- Immunohistochemistry (Formalin/PFA-fixed paraffin-embedded sections)

Immunohistochemical staining of human liver with WDR47 polyclonal antibody (Cat # PAB22019) shows granular cytoplasmic positivity in hepatocytes at 1:1000-1:2500 dilution.

## Gene Info — WDR47

**Entrez GeneID** [22911](#)

**Protein Accession#** [O94967](#)

**Gene Name** WDR47

**Gene Alias** FLJ90135, KIAA0893

**Gene Description** WD repeat domain 47

**Gene Ontology** [Hyperlink](#)

**Other Designations** OTTHUMP00000013443