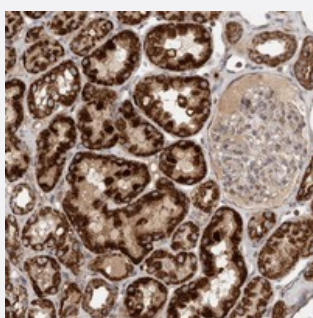


KIF21B polyclonal antibody

Catalog # PAB22014 Size 100 uL

Applications



Immunohistochemistry (Formalin/PFA-fixed paraffin-embedded sections)

Immunohistochemical staining of human kidney with KIF21B polyclonal antibody (Cat # PAB22014) shows strong granular cytoplasmic positivity in cells in tubules at 1:50-1:200 dilution.

Specification

Product Description	Rabbit polyclonal antibody raised against recombinant KIF21B.
Immunogen	Recombinant protein corresponding to amino acids of human KIF21B.
Sequence	RKTQEVSA LRRLAKPMSERVAGRAGLKPPMLDSGAEVSASTTSSEAESGARSVSSIVRQWNRKI NHFLGDHPAPT VNGTRPARKKFQKKG
Host	Rabbit
Reactivity	Human
Form	Liquid
Purification	Antigen affinity purification
Isotype	IgG
Recommend Usage	Immunohistochemistry (1:50-1:200) The optimal working dilution should be determined by the end user.
Storage Buffer	In PBS, pH 7.2 (40% glycerol, 0.02% sodium azide)

Storage Instruction

Store at 4°C. For long term storage store at -20°C.
Aliquot to avoid repeated freezing and thawing.

Note

This product contains sodium azide: a POISONOUS AND HAZARDOUS SUBSTANCE which should be handled by trained staff only.

Applications

- Immunohistochemistry (Formalin/PFA-fixed paraffin-embedded sections)

Immunohistochemical staining of human kidney with KIF21B polyclonal antibody (Cat # PAB22014) shows strong granular cytoplasmic positivity in cells in tubules at 1:50-1:200 dilution.

Gene Info — KIF21B

Entrez GeneID[23046](#)**Protein Accession#**[O75037](#)**Gene Name**

KIF21B

Gene Alias

FLJ16314

Gene Description

kinesin family member 21B

Omim ID[608322](#)**Gene Ontology**[Hyperlink](#)**Gene Summary**

KIF21B belongs to a family of plus end-directed kinesin (see MIM 600025) motor proteins. Neurons use kinesin and dynein (see MIM 600112) microtubule-dependent motor proteins to transport essential cellular components along axonal and dendritic microtubules.[supplied by OMIM]

Other Designations

-