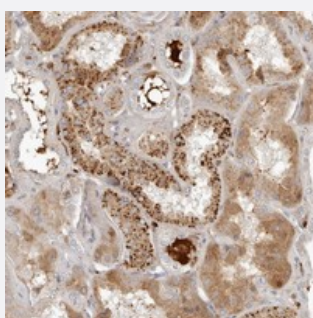


KLHL38 polyclonal antibody

Catalog # PAB22008 Size 100 uL

Applications



Immunohistochemistry (Formalin/PFA-fixed paraffin-embedded sections)

Immunohistochemical staining of human kidney with KLHL38 polyclonal antibody (Cat # PAB22008) shows strong granular positivity in tubular cells at 1:50-1:200 dilution.

Specification

Product Description	Rabbit polyclonal antibody raised against recombinant KLHL38.
Immunogen	Recombinant protein corresponding to amino acids of human KLHL38.
Sequence	IHPAFFHHFIANDALLQSSPACQIILETAKRQMFSLCGTTVPDCKLLLVPPRNSYQDFLILLGGRKD SQQTTRDVLLYSKQTGWQ
Host	Rabbit
Reactivity	Human
Form	Liquid
Purification	Antigen affinity purification
Isotype	IgG
Recommend Usage	Immunohistochemistry (1:50-1:200) The optimal working dilution should be determined by the end user.
Storage Buffer	In PBS, pH 7.2 (40% glycerol, 0.02% sodium azide)

Storage Instruction

Store at 4°C. For long term storage store at -20°C.
Aliquot to avoid repeated freezing and thawing.

Note

This product contains sodium azide: a POISONOUS AND HAZARDOUS SUBSTANCE which should be handled by trained staff only.

Applications

- Immunohistochemistry (Formalin/PFA-fixed paraffin-embedded sections)

Immunohistochemical staining of human kidney with KLHL38 polyclonal antibody (Cat # PAB22008) shows strong granular positivity in tubular cells at 1:50-1:200 dilution.

Gene Info — KLHL38

Entrez GeneID[340359](#)**Protein Accession#**[Q2WGJ6](#)**Gene Name**

KLHL38

Gene Alias

C8ORFK36

Gene Description

kelch-like 38 (Drosophila)

Gene Ontology[Hyperlink](#)**Other Designations**

kelch-like 38

Disease

- [Tobacco Use Disorder](#)