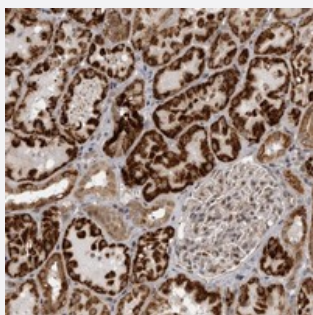


C1orf109 polyclonal antibody

Catalog # PAB22007 Size 100 uL

Applications



Immunohistochemistry (Formalin/PFA-fixed paraffin-embedded sections)

Immunohistochemical staining of human kidney with C1orf109 polyclonal antibody (Cat # PAB22007) shows strong cytoplasmic positivity in cells of renal tubules.

Specification

Product Description	Rabbit polyclonal antibody raised against recombinant C1orf109.
Immunogen	Recombinant protein corresponding to amino acids of human C1orf109.
Sequence	DMLEWLQDIERHYRKSYLKRKYLSSIQWGLANIQALPKAWDRISKDEHQDLVQDILLNVSFFLE E
Host	Rabbit
Reactivity	Human
Form	Liquid
Purification	Antigen affinity purification
Isotype	IgG
Recommend Usage	Immunohistochemistry (1:50-1:200) The optimal working dilution should be determined by the end user.
Storage Buffer	In PBS, pH 7.2 (40% glycerol, 0.02% sodium azide)

Storage Instruction

Store at 4°C. For long term storage store at -20°C.
Aliquot to avoid repeated freezing and thawing.

Note

This product contains sodium azide: a POISONOUS AND HAZARDOUS SUBSTANCE which should be handled by trained staff only.

Applications

- Immunohistochemistry (Formalin/PFA-fixed paraffin-embedded sections)

Immunohistochemical staining of human kidney with C1orf109 polyclonal antibody (Cat # PAB22007) shows strong cytoplasmic positivity in cells of renal tubules.

Gene Info — C1orf109

Entrez GeneID[54955](#)**Protein Accession#**[Q9NX04](#)**Gene Name**

C1orf109

Gene Alias

FLJ20508

Gene Description

chromosome 1 open reading frame 109

Gene Ontology[Hyperlink](#)**Other Designations**

OTTHUMP00000004518|hypothetical protein LOC54955