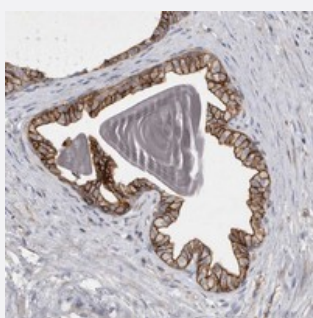


TPCN2 polyclonal antibody

Catalog # PAB22001 Size 100 uL

Applications



Immunohistochemistry (Formalin/PFA-fixed paraffin-embedded sections)

Immunohistochemical staining of human prostate with TPCN2 polyclonal antibody (Cat # PAB22001) shows strong membranous positivity in glandular cells.

Specification

Product Description	Rabbit polyclonal antibody raised against recombinant TPCN2.
Immunogen	Recombinant protein corresponding to amino acids of human TPCN2.
Sequence	QFRGYLMKSLQTSLFRRRLGTRAAFEVLSSMVGEGGAFPPQAVGVKPKQNLLQVLQKVQLDSSHR QAMMEKVRSYGSVLLSAEEFQKLFNELDRSVVKEHPPRPEYQSPFLQSAQFLFGHYF
Host	Rabbit
Reactivity	Human
Form	Liquid
Purification	Antigen affinity purification
Isotype	IgG
Recommend Usage	Immunohistochemistry (1:50-1:200) The optimal working dilution should be determined by the end user.
Storage Buffer	In PBS, pH 7.2 (40% glycerol, 0.02% sodium azide)

Storage Instruction

Store at 4°C. For long term storage store at -20°C.
Aliquot to avoid repeated freezing and thawing.

Note

This product contains sodium azide: a POISONOUS AND HAZARDOUS SUBSTANCE which should be handled by trained staff only.

Applications

- Immunohistochemistry (Formalin/PFA-fixed paraffin-embedded sections)

Immunohistochemical staining of human prostate with TPCN2 polyclonal antibody (Cat # PAB22001) shows strong membranous positivity in glandular cells.

Gene Info — TPCN2

Entrez GeneID[219931](#)**Protein Accession#**[Q8NHX9](#)**Gene Name**

TPCN2

Gene Alias

FLJ41094, SHEP10, TPC2

Gene Description

two pore segment channel 2

Gene Ontology[Hyperlink](#)**Gene Summary**

TPCN2 is a putative cation-selective ion channel related to CATSPER (see CATSPER1; MIM 606389) and transient receptor potential channels (see TRPC1; MIM 602343) (Clapham and Garbers, 2005 [PubMed 16382101]).[supplied by OMIM]

Other Designations

two-pore calcium channel protein 2

Disease

- [Melanosis](#)