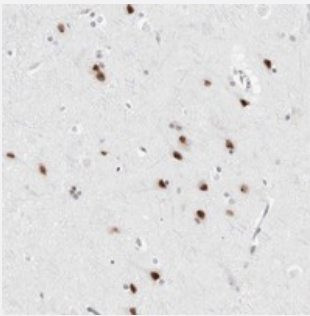


C1orf162 polyclonal antibody

Catalog # PAB21993 Size 100 uL

Applications



Immunohistochemistry (Formalin/PFA-fixed paraffin-embedded sections)

Immunohistochemical staining of human cerebral cortex with C1orf162 polyclonal antibody (Cat # PAB21993) shows strong nuclear positivity in neuronal cells at 1:200-1:500 dilution.

Specification

Product Description	Rabbit polyclonal antibody raised against recombinant C1orf162.
Immunogen	Recombinant protein corresponding to amino acids of human C1orf162.
Sequence	NGSTCKPDTERQGTLSTAAPTTSPAPCLSNHHNK
Host	Rabbit
Reactivity	Human
Form	Liquid
Purification	Antigen affinity purification
Isotype	IgG
Recommend Usage	Immunohistochemistry (1:200-1:500) The optimal working dilution should be determined by the end user.
Storage Buffer	In PBS, pH 7.2 (40% glycerol, 0.02% sodium azide)
Storage Instruction	Store at 4°C. For long term storage store at -20°C. Aliquot to avoid repeated freezing and thawing.

Note

This product contains sodium azide: a POISONOUS AND HAZARDOUS SUBSTANCE which should be handled by trained staff only.

Applications

- Immunohistochemistry (Formalin/PFA-fixed paraffin-embedded sections)

Immunohistochemical staining of human cerebral cortex with C1orf162 polyclonal antibody (Cat # PAB21993) shows strong nuclear positivity in neuronal cells at 1:200-1:500 dilution.

Gene Info — C1orf162

Entrez GeneID	128346
---------------	------------------------

Protein Accession#	Q8NEQ5
--------------------	------------------------

Gene Name	C1orf162
-----------	----------

Gene Alias	MGC24133
------------	----------

Gene Description	chromosome 1 open reading frame 162
------------------	-------------------------------------

Gene Ontology	Hyperlink
---------------	---------------------------

Other Designations	OTTHUMP00000013474 hypothetical protein LOC128346
--------------------	---