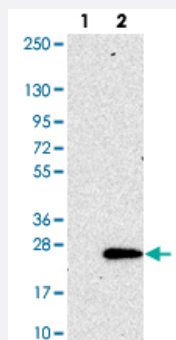


SEC11C polyclonal antibody

Catalog # PAB21982 Size 100 uL

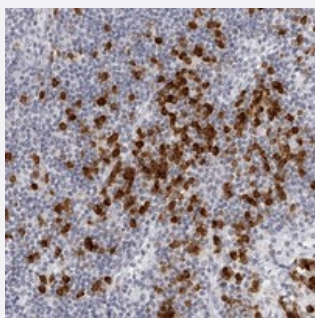
Applications



Western Blot (Transfected lysate)

Western blot analysis of Lane 1: Negative control (vector only transfected HEK293T lysate).

Lane 2: Over-expression lysate (Co-expressed with a C-terminal myc-DDK tag (~3.1 kDa) in mammalian HEK293T cells with SEC11C polyclonal antibody (Cat # PAB21982).



Immunohistochemistry (Formalin/PFA-fixed paraffin-embedded sections)

Immunohistochemical staining of human lymph node with SEC11C polyclonal antibody (Cat # PAB21982) shows strong cytoplasmic positivity in subsets of lymphoid cells outside reaction centra at 1:50-1:200 dilution.

Specification

Product Description	Rabbit polyclonal antibody raised against recombinant SEC11C.
Immunogen	Recombinant protein corresponding to amino acids of human SEC11C.
Sequence	MVRAGAVGAHL PASGLDIFGDLKMKMRQLYYQV
Host	Rabbit
Reactivity	Human
Form	Liquid
Purification	Antigen affinity purification

Isotype	IgG
Recommend Usage	Immunohistochemistry (1:50-1:200) The optimal working dilution should be determined by the end user.
Storage Buffer	In PBS, pH 7.2 (40% glycerol, 0.02% sodium azide)
Storage Instruction	Store at 4°C. For long term storage store at -20°C. Aliquot to avoid repeated freezing and thawing.
Note	This product contains sodium azide: a POISONOUS AND HAZARDOUS SUBSTANCE which should be handled by trained staff only.

Applications

- Western Blot (Transfected lysate)

Western blot analysis of Lane 1: Negative control (vector only transfected HEK293T lysate).

Lane 2: Over-expression lysate (Co-expressed with a C-terminal myc-DDK tag (~3.1 kDa) in mammalian HEK293T cells with SEC11C polyclonal antibody (Cat # PAB21982).

- Immunohistochemistry (Formalin/PFA-fixed paraffin-embedded sections)

Immunohistochemical staining of human lymph node with SEC11C polyclonal antibody (Cat # PAB21982) shows strong cytoplasmic positivity in subsets of lymphoid cells outside reaction centra at 1:50-1:200 dilution.

Gene Info — SEC11C

Entrez GeneID	90701
Protein Accession#	Q9BY50
Gene Name	SEC11C
Gene Alias	SEC11L3, SPC21, SPCS4C
Gene Description	SEC11 homolog C (S. cerevisiae)
Gene Ontology	Hyperlink
Other Designations	SEC11-like 3

Pathway

- [Protein export](#)