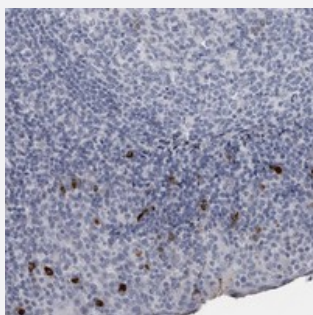


SLC25A39 polyclonal antibody

Catalog # PAB21980 Size 100 uL

Applications



Immunohistochemistry (Formalin/PFA-fixed paraffin-embedded sections)

Immunohistochemical staining of human tonsil with SLC25A39 polyclonal antibody (Cat # PAB21980) shows strong cytoplasmic positivity in subsets of lymphoid cells at 1:50-1:200 dilution.

Specification

Product Description	Rabbit polyclonal antibody raised against recombinant SLC25A39.
Immunogen	Recombinant protein corresponding to amino acids of human SLC25A39.
Sequence	RLQSQRPSMASELMPSRLWSLSYTKWKCLLYCNGVLEPLYLCPNGARCATWFQDPTRFTGTM DAFVKVRHEGTRTL
Host	Rabbit
Reactivity	Human
Form	Liquid
Purification	Antigen affinity purification
Isotype	IgG
Recommend Usage	Immunohistochemistry (1:50-1:200) The optimal working dilution should be determined by the end user.
Storage Buffer	In PBS, pH 7.2 (40% glycerol, 0.02% sodium azide)

Storage Instruction

Store at 4°C. For long term storage store at -20°C.
Aliquot to avoid repeated freezing and thawing.

Note

This product contains sodium azide: a POISONOUS AND HAZARDOUS SUBSTANCE which should be handled by trained staff only.

Applications

- Immunohistochemistry (Formalin/PFA-fixed paraffin-embedded sections)

Immunohistochemical staining of human tonsil with SLC25A39 polyclonal antibody (Cat # PAB21980) shows strong cytoplasmic positivity in subsets of lymphoid cells at 1:50-1:200 dilution.

Gene Info — SLC25A39

Entrez GeneID[51629](#)**Protein Accession#**[Q9BZJ4](#)**Gene Name**

SLC25A39

Gene Alias

CGI-69, CGI69, FLJ22407

Gene Description

solute carrier family 25, member 39

Omim ID[610820](#)**Gene Ontology**[Hyperlink](#)**Gene Summary**

SLC25A39 belongs to the SLC25 family of mitochondrial carrier proteins (Haitina et al., 2006 [PubMed 16949250]).[supplied by OMIM]

Other Designations

-