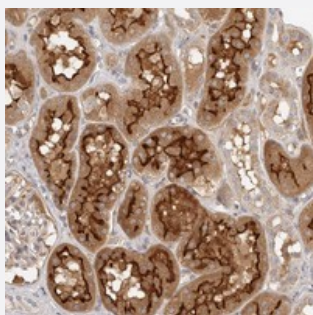


# MICALL2 polyclonal antibody

Catalog # PAB21966      Size 100 uL

## Applications



### Immunohistochemistry (Formalin/PFA-fixed paraffin-embedded sections)

Immunohistochemical staining of human kidney with MICALL2 polyclonal antibody (Cat # PAB21966) shows strong cytoplasmic and membrane positivity in cells in tubules.

## Specification

<b>Product Description</b>	Rabbit polyclonal antibody raised against recombinant MICALL2.
<b>Immunogen</b>	Recombinant protein corresponding to amino acids of human MICALL2.
<b>Sequence</b>	DVCDNWL RPEPPGQEARVQSWKEEEKKPHLQGKPG RPLSPANVPALPGETVTSPVRLHPDYL SPEEIQRQLQDIERRLELRGVELEKRL
<b>Host</b>	Rabbit
<b>Reactivity</b>	Human
<b>Form</b>	Liquid
<b>Purification</b>	Antigen affinity purification
<b>Isotype</b>	IgG
<b>Recommend Usage</b>	Immunohistochemistry (1:200-1:500) The optimal working dilution should be determined by the end user.
<b>Storage Buffer</b>	In PBS, pH 7.2 (40% glycerol, 0.02% sodium azide)

**Storage Instruction**

Store at 4°C. For long term storage store at -20°C.  
Aliquot to avoid repeated freezing and thawing.

**Note**

This product contains sodium azide: a POISONOUS AND HAZARDOUS SUBSTANCE which should be handled by trained staff only.

## Applications

- Immunohistochemistry (Formalin/PFA-fixed paraffin-embedded sections)

Immunohistochemical staining of human kidney with MICALL2 polyclonal antibody (Cat # PAB21966) shows strong cytoplasmic and membrane positivity in cells in tubules.

## Gene Info — MICALL2

**Entrez GeneID**[79778](#)**Protein Accession#**[Q8IY33](#)**Gene Name**

MICALL2

**Gene Alias**

FLJ23471, FLJ41996, FLJ44858, FLJ45410, JRAB, MGC46023, MICAL-L2

**Gene Description**

MICAL-like 2

**Gene Ontology**[Hyperlink](#)**Other Designations**

junctional Rab13-binding protein