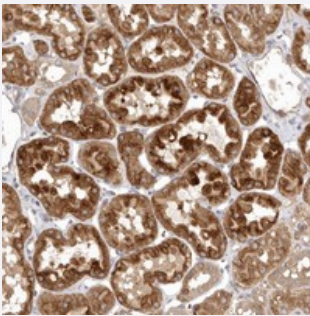


KIF2B polyclonal antibody

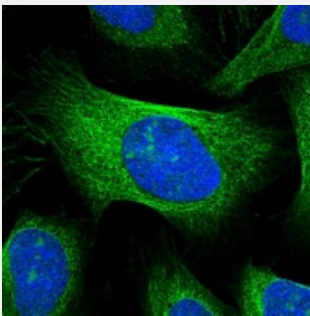
Catalog # PAB21961 Size 100 uL

Applications



Immunohistochemistry (Formalin/PFA-fixed paraffin-embedded sections)

Immunohistochemical staining of human kidney with KIF2B polyclonal antibody (Cat # PAB21961) shows strong cytoplasmic positivity in renal tubules at 1:50-1:200 dilution.



Immunofluorescence

Immunofluorescent staining of human cell line U-2 OS with KIF2B polyclonal antibody (Cat # PAB21961) at 1-4 ug/mL dilution shows positivity in nucleoli and cytoskeleton (microtubules).

Specification

Product Description	Rabbit polyclonal antibody raised against recombinant KIF2B.
Immunogen	Recombinant protein corresponding to amino acids of human KIF2B.
Sequence	LPESPCLSPLKPLKPHFGDIQEGYVAIQRSDKRIHLAVVTEINRENYWVTVEWVEKAVKKGKKIDL ETILLNPA LDSA EHP
Host	Rabbit
Reactivity	Human
Form	Liquid

Purification	Antigen affinity purification
Isotype	IgG
Recommend Usage	Immunohistochemistry (1:50-1:200) Immunofluorescence (1-4 ug/mL) The optimal working dilution should be determined by the end user.
Storage Buffer	In PBS, pH 7.2 (40% glycerol, 0.02% sodium azide)
Storage Instruction	Store at 4°C. For long term storage store at -20°C. Aliquot to avoid repeated freezing and thawing.
Note	This product contains sodium azide: a POISONOUS AND HAZARDOUS SUBSTANCE which should be handled by trained staff only.

Applications

- Immunohistochemistry (Formalin/PFA-fixed paraffin-embedded sections)

Immunohistochemical staining of human kidney with KIF2B polyclonal antibody (Cat # PAB21961) shows strong cytoplasmic positivity in renal tubules at 1:50-1:200 dilution.

- Immunofluorescence

Immunofluorescent staining of human cell line U-2 OS with KIF2B polyclonal antibody (Cat # PAB21961) at 1-4 ug/mL dilution shows positivity in nucleoli and cytoskeleton (microtubules).

Gene Info — KIF2B

Entrez GeneID	84643
Protein Accession#	Q8N4N8
Gene Name	KIF2B
Gene Alias	-
Gene Description	kinesin family member 2B
Gene Ontology	Hyperlink
Other Designations	kinesin protein

Disease

- [Genetic Predisposition to Disease](#)
- [Obesity](#)