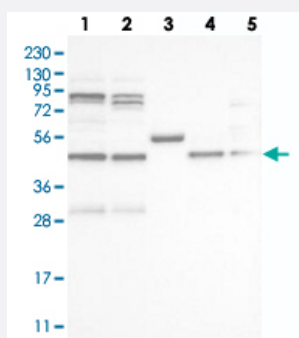


VPS37A polyclonal antibody

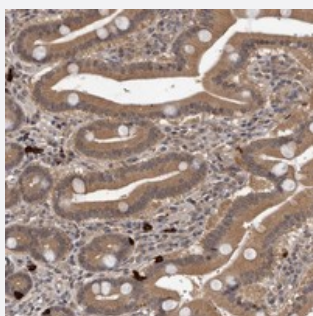
Catalog # PAB21955 Size 100 uL

Applications



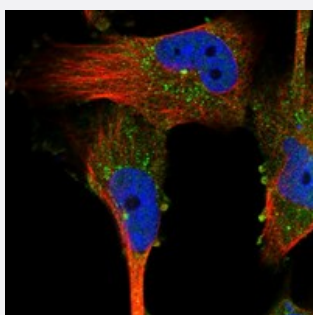
Western Blot

Western blot analysis of Lane 1: RT-4, Lane 2: U-251 MG, Lane 3: Human Plasma, Lane 4: Liver, Lane 5: Tonsil with VPS37A polyclonal antibody (Cat # PAB21955) at 1:250-1:500 dilution.



Immunohistochemistry (Formalin/PFA-fixed paraffin-embedded sections)

Immunohistochemical staining of human duodenum with VPS37A polyclonal antibody (Cat # PAB21955) shows moderate cytoplasmic positivity in glandular cells at 1:200-1:500 dilution.



Immunofluorescence

Immunofluorescent staining of human cell line U-251MG with VPS37A polyclonal antibody (Cat # PAB21955) at 1-4 ug/mL dilution shows positivity in cytoplasm, vesicles and centrosome.

Specification

Product Description

Rabbit polyclonal antibody raised against recombinant VPS37A.

Immunogen

Recombinant protein corresponding to amino acids of human VPS37A.

Sequence	DVPDAFPELSELSVSQLTDMNEQEEVLLEQFLTLPLQLKQIITDKDDLKSVKIEELARKNLLLEPSLEAKRQTVLDKYELLTQMKSTF
Host	Rabbit
Reactivity	Human
Form	Liquid
Purification	Antigen affinity purification
Isotype	IgG
Recommend Usage	Immunohistochemistry (1:200-1:500) Western Blot (1:250-1:500) Immunofluorescence (1-4 ug/mL) The optimal working dilution should be determined by the end user.
Storage Buffer	In PBS, pH 7.2 (40% glycerol, 0.02% sodium azide)
Storage Instruction	Store at 4°C. For long term storage store at -20°C. Aliquot to avoid repeated freezing and thawing.
Note	This product contains sodium azide: a POISONOUS AND HAZARDOUS SUBSTANCE which should be handled by trained staff only.

Applications

- Western Blot

Western blot analysis of Lane 1: RT-4, Lane 2: U-251 MG, Lane 3: Human Plasma, Lane 4: Liver, Lane 5: Tonsil with VPS37A polyclonal antibody (Cat # PAB21955) at 1:250-1:500 dilution.

- Immunohistochemistry (Formalin/PFA-fixed paraffin-embedded sections)

Immunohistochemical staining of human duodenum with VPS37A polyclonal antibody (Cat # PAB21955) shows moderate cytoplasmic positivity in glandular cells at 1:200-1:500 dilution.

- Immunofluorescence

Immunofluorescent staining of human cell line U-251MG with VPS37A polyclonal antibody (Cat # PAB21955) at 1-4 ug/mL dilution shows positivity in cytoplasm, vesicles and centrosome.

Gene Info — VPS37A

Entrez GeneID [137492](#)

Protein Accession# [Q8NEZ2](#)

Gene Name	VPS37A
Gene Alias	FLJ32642, FLJ42616, HCRP1, PQBP2
Gene Description	vacuolar protein sorting 37 homolog A (S. cerevisiae)
Omim ID	609927
Gene Ontology	Hyperlink
Other Designations	hepatocellular carcinoma related protein 1 polyglutamine binding protein 2 vacuolar protein sorting 37A

Pathway

- [Endocytosis](#)