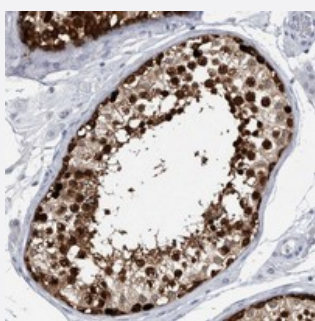


LURAP1L polyclonal antibody

Catalog # PAB21950 Size 100 uL

Applications



Immunohistochemistry (Formalin/PFA-fixed paraffin-embedded sections)

Immunohistochemical staining of human testis with LURAP1L polyclonal antibody (Cat # PAB21950) shows strong cytoplasmic positivity in cells of seminiferous ducts.

Specification

Product Description	Rabbit polyclonal antibody raised against recombinant LURAP1L.
Immunogen	Recombinant protein corresponding to amino acids of human LURAP1L.
Sequence	KVPESLVRSLRGEEPVPREDRDPCGGSGGGGGGGGGCSSSSSYCSFPPLSSSSSSSPTSG SPRGSHSSALERLETKLHLLRQEMVNLRTDVRLMRQLLVINESIESIKW
Host	Rabbit
Reactivity	Human
Form	Liquid
Purification	Antigen affinity purification
Isotype	IgG
Recommend Usage	Immunohistochemistry (1:200-1:500) The optimal working dilution should be determined by the end user.
Storage Buffer	In PBS, pH 7.2 (40% glycerol, 0.02% sodium azide)

Storage Instruction

Store at 4°C. For long term storage store at -20°C.
Aliquot to avoid repeated freezing and thawing.

Note

This product contains sodium azide: a POISONOUS AND HAZARDOUS SUBSTANCE which should be handled by trained staff only.

Applications

- Immunohistochemistry (Formalin/PFA-fixed paraffin-embedded sections)

Immunohistochemical staining of human testis with LURAP1L polyclonal antibody (Cat # PAB21950) shows strong cytoplasmic positivity in cells of seminiferous ducts.

Gene Info — LURAP1L

Entrez GeneID[286343](#)**Protein Accession#**[Q8IV03](#)**Gene Name**

LURAP1L

Gene Alias

HYST0841, C9orf150, bA3L8.2

Gene Description

leucine rich adaptor protein 1-like

Gene Ontology[Hyperlink](#)