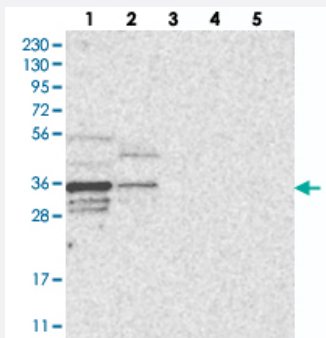


# OTUD6B polyclonal antibody

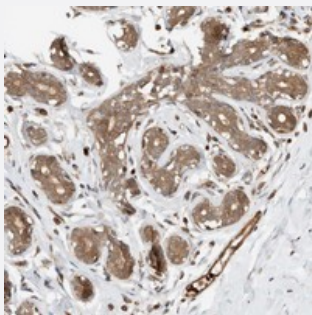
Catalog # PAB21947      Size 100 uL

## Applications



### Western Blot

Western blot analysis of Lane 1: RT-4, Lane 2: U-251 MG, Lane 3: Human Plasma, Lane 4: Liver, Lane 5: Tonsil with OTUD6B polyclonal antibody (Cat # PAB21947) at 1:250-1:500 dilution.



### Immunohistochemistry (Formalin/PFA-fixed paraffin-embedded sections)

Immunohistochemical staining of human breast with OTUD6B polyclonal antibody (Cat # PAB21947) shows distinct cytoplasmic positivity in glandular cells at 1:50-1:200 dilution.

## Specification

<b>Product Description</b>	Rabbit polyclonal antibody raised against recombinant OTUD6B.
<b>Immunogen</b>	Recombinant protein corresponding to amino acids of human OTUD6B.
<b>Sequence</b>	IQGMKNAVPKNDKKRRKQLTEDVAKLEKEMEQKHREELEQLKLTTKENKIDSVAVNISNLV
<b>Host</b>	Rabbit
<b>Reactivity</b>	Human
<b>Form</b>	Liquid
<b>Purification</b>	Antigen affinity purification

Isotype	IgG
Recommend Usage	Immunohistochemistry (1:50-1:200) Western Blot (1:250-1:500) The optimal working dilution should be determined by the end user.
Storage Buffer	In PBS, pH 7.2 (40% glycerol, 0.02% sodium azide)
Storage Instruction	Store at 4°C. For long term storage store at -20°C. Aliquot to avoid repeated freezing and thawing.
Note	This product contains sodium azide: a POISONOUS AND HAZARDOUS SUBSTANCE which should be handled by trained staff only.

## Applications

- Western Blot

Western blot analysis of Lane 1: RT-4, Lane 2: U-251 MG, Lane 3: Human Plasma, Lane 4: Liver, Lane 5: Tonsil with OTUD6B polyclonal antibody (Cat # PAB21947) at 1:250-1:500 dilution.

- Immunohistochemistry (Formalin/PFA-fixed paraffin-embedded sections)

Immunohistochemical staining of human breast with OTUD6B polyclonal antibody (Cat # PAB21947) shows distinct cytoplasmic positivity in glandular cells at 1:50-1:200 dilution.

## Gene Info — OTUD6B

Entrez GeneID	<a href="#">51633</a>
Protein Accession#	<a href="#">Q8N6M0</a>
Gene Name	OTUD6B
Gene Alias	CGI-77, DUBA5
Gene Description	OTU domain containing 6B
Gene Ontology	<a href="#">Hyperlink</a>
Gene Summary	Deubiquitinating enzymes (DUBs; see MIM 603478) are proteases that specifically cleave ubiquitin (MIM 191339) linkages, negating the action of ubiquitin ligases. DUBA5 belongs to a DUB subfamily characterized by an ovarian tumor (OTU) domain.[supplied by OMIM]
Other Designations	-