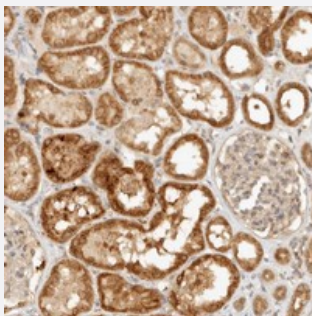


KIF2B polyclonal antibody

Catalog # PAB21945 Size 100 uL

Applications



Immunohistochemistry (Formalin/PFA-fixed paraffin-embedded sections)

Immunohistochemical staining of human kidney with KIF2B polyclonal antibody (Cat # PAB21945) shows strong cytoplasmic positivity in cells of tubules.

Specification

Product Description	Rabbit polyclonal antibody raised against recombinant KIF2B.
Immunogen	Recombinant protein corresponding to amino acids of human KIF2B.
Sequence	ISPGMTSCENTLNTLRYANRVKKLNVDVRPYHRGHYPIGHEAPRMLKSHIGNSEMSL
Host	Rabbit
Reactivity	Human
Form	Liquid
Purification	Antigen affinity purification
Isotype	IgG
Recommend Usage	Immunohistochemistry (1:50-1:200) The optimal working dilution should be determined by the end user.
Storage Buffer	In PBS, pH 7.2 (40% glycerol, 0.02% sodium azide)
Storage Instruction	Store at 4°C. For long term storage store at -20°C. Aliquot to avoid repeated freezing and thawing.

Note

This product contains sodium azide: a POISONOUS AND HAZARDOUS SUBSTANCE which should be handled by trained staff only.

Applications

- Immunohistochemistry (Formalin/PFA-fixed paraffin-embedded sections)

Immunohistochemical staining of human kidney with KIF2B polyclonal antibody (Cat # PAB21945) shows strong cytoplasmic positivity in cells of tubules.

Gene Info — KIF2B

Entrez GeneID	84643
---------------	-----------------------

Protein Accession#	Q8N4N8
--------------------	------------------------

Gene Name	KIF2B
-----------	-------

Gene Alias	-
------------	---

Gene Description	kinesin family member 2B
------------------	--------------------------

Gene Ontology	Hyperlink
---------------	---------------------------

Other Designations	kinesin protein
--------------------	-----------------

Disease

- [Genetic Predisposition to Disease](#)
- [Obesity](#)