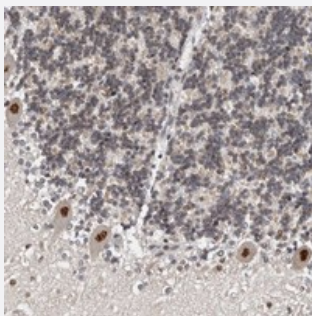


KIF2B polyclonal antibody

Catalog # PAB21944 Size 100 uL

Applications



Immunohistochemistry (Formalin/PFA-fixed paraffin-embedded sections)

Immunohistochemical staining of human cerebellum with KIF2B polyclonal antibody (Cat # PAB21944) shows strong nuclear positivity in purkinje cells.

Specification

Product Description	Rabbit polyclonal antibody raised against recombinant KIF2B.
Immunogen	Recombinant protein corresponding to amino acids of human KIF2B.
Sequence	ALAPSSAIRDQRTATKWVAMIPQKNQTASGDSLDVRVPSKPCLMKQKKSPCLWEIQKLQEQREK RRRLQQEIRARRALDVNTRN
Host	Rabbit
Reactivity	Human
Form	Liquid
Purification	Antigen affinity purification
Isotype	IgG
Recommend Usage	Immunohistochemistry (1:200-1:500) The optimal working dilution should be determined by the end user.
Storage Buffer	In PBS, pH 7.2 (40% glycerol, 0.02% sodium azide)

Storage Instruction

Store at 4°C. For long term storage store at -20°C.
Aliquot to avoid repeated freezing and thawing.

Note

This product contains sodium azide: a POISONOUS AND HAZARDOUS SUBSTANCE which should be handled by trained staff only.

Applications

- Immunohistochemistry (Formalin/PFA-fixed paraffin-embedded sections)

Immunohistochemical staining of human cerebellum with KIF2B polyclonal antibody (Cat # PAB21944) shows strong nuclear positivity in purkinje cells.

Gene Info — KIF2B

Entrez GeneID[84643](#)**Protein Accession#**[Q8N4N8](#)**Gene Name**

KIF2B

Gene Alias

-

Gene Description

kinesin family member 2B

Gene Ontology[Hyperlink](#)**Other Designations**

kinesin protein

Disease

- [Genetic Predisposition to Disease](#)
- [Obesity](#)