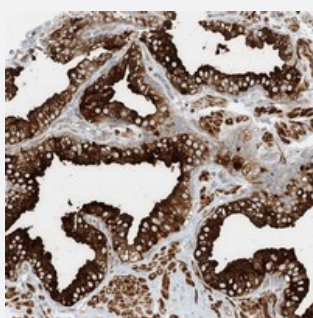


LOC201229 polyclonal antibody

Catalog # PAB21943 Size 100 uL

Applications



Immunohistochemistry (Formalin/PFA-fixed paraffin-embedded sections)

Immunohistochemical staining of human prostate with LOC201229 polyclonal antibody (Cat # PAB21943) strong cytoplasmic positivity in glandular cells at 1:20-1:50 dilution.

Specification

Product Description	Rabbit polyclonal antibody raised against recombinant LOC201229.
Immunogen	Recombinant protein corresponding to amino acids of human LOC201229.
Sequence	QLYRYLLRCCQQLPTKGIQQHYKHAVRQSFRVHSDNPERIQQIIKRAIEDADWIM
Host	Rabbit
Reactivity	Human
Form	Liquid
Purification	Antigen affinity purification
Isotype	IgG
Recommend Usage	Immunohistochemistry (1:20-1:50) The optimal working dilution should be determined by the end user.
Storage Buffer	In PBS, pH 7.2 (40% glycerol, 0.02% sodium azide)
Storage Instruction	Store at 4°C. For long term storage store at -20°C. Aliquot to avoid repeated freezing and thawing.

Note

This product contains sodium azide: a POISONOUS AND HAZARDOUS SUBSTANCE which should be handled by trained staff only.

Applications

- Immunohistochemistry (Formalin/PFA-fixed paraffin-embedded sections)

Immunohistochemical staining of human prostate with LOC201229 polyclonal antibody (Cat # PAB21943) strong cytoplasmic positivity in glandular cells at 1:20-1:50 dilution.

Gene Info — LOC201229

Entrez GeneID	201229
Protein Accession#	A8MSI8
Gene Name	LOC201229
Gene Alias	HSD24
Gene Description	hypothetical protein LOC201229
Gene Ontology	Hyperlink
Other Designations	-