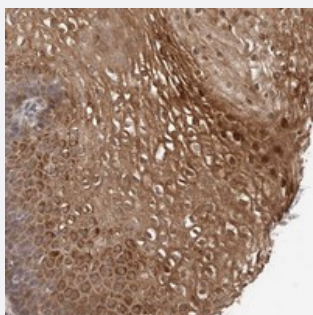


# TEX13B polyclonal antibody

Catalog # PAB21926      Size 100 uL

## Applications



### Immunohistochemistry (Formalin/PFA-fixed paraffin-embedded sections)

Immunohistochemical staining of human esophagus with TEX13B polyclonal antibody (Cat # PAB21926) shows strong cytoplasmic and nuclear positivity in squamous epithelial cells at 1:20-1:50 dilution.

## Specification

Product Description	Rabbit polyclonal antibody raised against recombinant TEX13B.
Immunogen	Recombinant protein corresponding to amino acids of human TEX13B.
Sequence	AGEQEKEAVAAAGAAGGKGEERYAEAGPAPAEVLQGLGGGFRQPLGAVAGKLHLCGAEGERS QVSTNSHVCLLWAWVHSLTGASSCPAPYLIHILIPMPFVRLLSHTQYTPFTSKGHRTGSNS
Host	Rabbit
Reactivity	Human
Form	Liquid
Purification	Antigen affinity purification
Isotype	IgG
Recommend Usage	Immunohistochemistry (1:20-1:50) The optimal working dilution should be determined by the end user.
Storage Buffer	In PBS, pH 7.2 (40% glycerol, 0.02% sodium azide)

**Storage Instruction**

Store at 4°C. For long term storage store at -20°C.  
Aliquot to avoid repeated freezing and thawing.

**Note**

This product contains sodium azide: a POISONOUS AND HAZARDOUS SUBSTANCE which should be handled by trained staff only.

## Applications

- Immunohistochemistry (Formalin/PFA-fixed paraffin-embedded sections)

Immunohistochemical staining of human esophagus with TEX13B polyclonal antibody (Cat # PAB21926) shows strong cytoplasmic and nuclear positivity in squamous epithelial cells at 1:20-1:50 dilution.

## Gene Info — TEX13B

**Entrez GeneID**[56156](#)**Protein Accession#**[Q9BXU2](#)**Gene Name**

TEX13B

**Gene Alias**

TGC3B, TSGA5

**Gene Description**

testis expressed 13B

**Omim ID**[300313](#)**Gene Ontology**[Hyperlink](#)**Gene Summary**

This gene is similar to a mouse gene that is expressed in the testis. [provided by RefSeq]

**Other Designations**

OTTHUMP00000023819|testis expressed sequence 13B