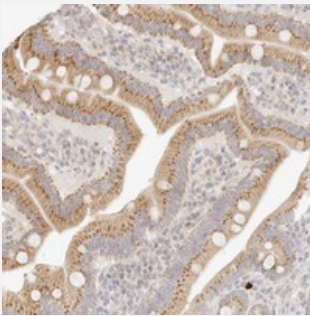


FAM20B polyclonal antibody

Catalog # PAB21922 Size 100 uL

Applications



Immunohistochemistry (Formalin/PFA-fixed paraffin-embedded sections)

Immunohistochemical staining of human duodenum with FAM20B polyclonal antibody (Cat # PAB21922) shows granular cytoplasmic positivity in glandular cells.

Specification

Product Description	Rabbit polyclonal antibody raised against recombinant FAM20B.
Immunogen	Recombinant protein corresponding to amino acids of human FAM20B.
Sequence	DAVKKTSPYDSGPRLLDIIDTAVFDYLIGNADRHYESFQDDEGASMLILLDNAKSFGNPSLDERSI LAPLYQCCIIIRVSTWNRLNYLKNGVLKSALKSAMAHDPISPVLSDPHLDAVDQRLLSVLATVKQCT DQFGMDTVLVED
Host	Rabbit
Reactivity	Human
Form	Liquid
Purification	Antigen affinity purification
Isotype	IgG
Recommend Usage	Immunohistochemistry (1:200-1:500) The optimal working dilution should be determined by the end user.
Storage Buffer	In PBS, pH 7.2 (40% glycerol, 0.02% sodium azide)

Storage Instruction

Store at 4°C. For long term storage store at -20°C.
Aliquot to avoid repeated freezing and thawing.

Note

This product contains sodium azide: a POISONOUS AND HAZARDOUS SUBSTANCE which should be handled by trained staff only.

Applications

- Immunohistochemistry (Formalin/PFA-fixed paraffin-embedded sections)

Immunohistochemical staining of human duodenum with FAM20B polyclonal antibody (Cat # PAB21922) shows granular cytoplasmic positivity in glandular cells.

Gene Info — FAM20B

Entrez GeneID[9917](#)**Protein Accession#**[O75063](#)**Gene Name**

FAM20B

Gene Alias

-

Gene Description

family with sequence similarity 20, member B

Omim ID[611063](#)**Gene Ontology**[Hyperlink](#)**Gene Summary**

O

Other Designations

OTTHUMP00000033047|hypothetical protein LOC9917