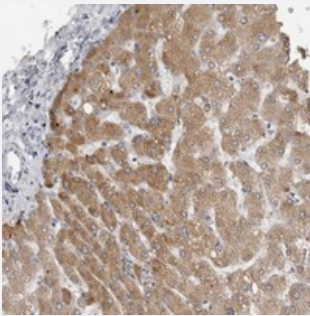


PRSS38 polyclonal antibody

Catalog # PAB21905 Size 100 uL

Applications



Immunohistochemistry (Formalin/PFA-fixed paraffin-embedded sections)

Immunohistochemical staining of human liver with PRSS38 polyclonal antibody (Cat # PAB21905) shows cytoplasmic positivity in hepatocytes.

Specification

Product Description	Rabbit polyclonal antibody raised against recombinant PRSS38.
Immunogen	Recombinant protein corresponding to amino acids of human PRSS38.
Sequence	NLTSANCWATGWGLVSKQGETSDELQEMQLPLILEPWCHLLYGHMSYMPDMLCAGDILNAKTV CEGDS
Host	Rabbit
Reactivity	Human
Form	Liquid
Purification	Antigen affinity purification
Isotype	IgG
Recommend Usage	Immunohistochemistry (1:50-1:200) The optimal working dilution should be determined by the end user.
Storage Buffer	In PBS, pH 7.2 (40% glycerol, 0.02% sodium azide)

Storage Instruction

Store at 4°C. For long term storage store at -20°C.
Aliquot to avoid repeated freezing and thawing.

Note

This product contains sodium azide: a POISONOUS AND HAZARDOUS SUBSTANCE which should be handled by trained staff only.

Applications

- Immunohistochemistry (Formalin/PFA-fixed paraffin-embedded sections)

Immunohistochemical staining of human liver with PRSS38 polyclonal antibody (Cat # PAB21905) shows cytoplasmic positivity in hepatocytes.

Gene Info — PRSS38

Entrez GeneID [339501](#)

Protein Accession# [A1L453](#)

Gene Name PRSS38

Gene Alias MGC163272

Gene Description marapsin 2

Gene Ontology [Hyperlink](#)

Other Designations OTTHUMP00000035840