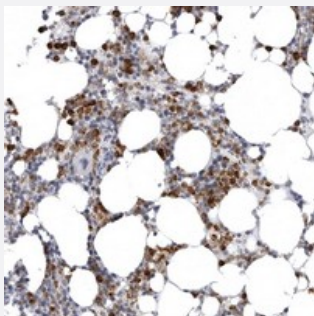


STAP2 polyclonal antibody

Catalog # PAB21900 Size 100 uL

Applications



Immunohistochemistry (Formalin/PFA-fixed paraffin-embedded sections)

Immunohistochemical staining of human bone marrow with STAP2 polyclonal antibody (Cat # PAB21900) shows strong cytoplasmic positivity in subsets of cells at 1:20-1:50 dilution.

Specification

Product Description	Rabbit polyclonal antibody raised against recombinant STAP2.
Immunogen	Recombinant protein corresponding to amino acids of human STAP2.
Sequence	QGLTIYFYNSNRDFQHVEKLNLGAFEKLTDEIPWGSSRDPGTHFSLILRNQEIKFKVETLECREMW KGFILTVVELRVPTDLTLLPGHLYMMSEVLAKKEEARALETPSCFLKVSRLAQLLLE
Host	Rabbit
Reactivity	Human
Form	Liquid
Purification	Antigen affinity purification
Isotype	IgG
Recommend Usage	Immunohistochemistry (1:20-1:50) The optimal working dilution should be determined by the end user.
Storage Buffer	In PBS, pH 7.2 (40% glycerol, 0.02% sodium azide)

Storage Instruction

Store at 4°C. For long term storage store at -20°C.
Aliquot to avoid repeated freezing and thawing.

Note

This product contains sodium azide: a POISONOUS AND HAZARDOUS SUBSTANCE which should be handled by trained staff only.

Applications

- Immunohistochemistry (Formalin/PFA-fixed paraffin-embedded sections)

Immunohistochemical staining of human bone marrow with STAP2 polyclonal antibody (Cat # PAB21900) shows strong cytoplasmic positivity in subsets of cells at 1:20-1:50 dilution.

Gene Info — STAP2

Entrez GeneID[55620](#)**Protein Accession#**[Q9UGK3](#)**Gene Name**

STAP2

Gene Alias

BKS, FLJ20234

Gene Description

signal transducing adaptor family member 2

Omim ID[607881](#)**Gene Ontology**[Hyperlink](#)**Gene Summary**

This gene encodes the substrate of breast tumor kinase, an Src-type non-receptor tyrosine kinase . The encoded protein possesses domains and several tyrosine phosphorylation sites characteristic of adaptor proteins that mediate the interactions linking proteins involved in signal transduction pathways. Alternative splicing results in multiple transcript variants. [provided by RefSeq]

Other Designations

breast tumor kinase substrate|brk kinase substrate|signal-transducing adaptor protein-2

Disease

- [Genetic Predisposition to Disease](#)
- [Narcolepsy](#)