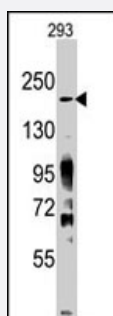


# Jmjd3 polyclonal antibody

Catalog # PAB2190

Size 400 uL

## Applications



### Western Blot (Cell lysate)

Western blot analysis of Jmjd3 polyclonal antibody (Cat # PAB2190) in 293 cell line lysates. Jmjd3 Center (arrow) was detected using the purified polyclonal antibody.

## Specification

<b>Product Description</b>	Rabbit polyclonal antibody raised against synthetic peptide of Jmjd3.
<b>Immunogen</b>	A synthetic peptide (conjugated with KLH) corresponding to internal region of mouse Jmjd3.
<b>Host</b>	Rabbit
<b>Reactivity</b>	Human, Mouse
<b>Form</b>	Liquid
<b>Purification</b>	Protein G purification
<b>Recommend Usage</b>	Western Blot (1:1000) The optimal working dilution should be determined by the end user.
<b>Storage Buffer</b>	In PBS (0.09% sodium azide)
<b>Storage Instruction</b>	Store at 4°C. For long term storage store at -20°C. Aliquot to avoid repeated freezing and thawing.
<b>Note</b>	This product contains sodium azide: a POISONOUS AND HAZARDOUS SUBSTANCE which should be handled by trained staff only.

## Applications

- Western Blot (Cell lysate)

Western blot analysis of Jmjd3 polyclonal antibody (Cat # PAB2190) in 293 cell line lysates. Jmjd3 Center (arrow) was detected using the purified polyclonal antibody.

## Gene Info — Jmjd3

Entrez GeneID	<a href="#">216850</a>
---------------	------------------------

Protein Accession#	<a href="#">NP_001017426;Q5NCY0</a>
--------------------	-------------------------------------

Gene Name	Jmjd3
-----------	-------

Gene Alias	1700064E03Rik, BC038313, KIAA0346, mKIAA0346
------------	--

Gene Description	jumonji domain containing 3
------------------	-----------------------------

Gene Ontology	<a href="#">Hyperlink</a>
---------------	---------------------------

Other Designations	OTTMUSP00000006193
--------------------	--------------------