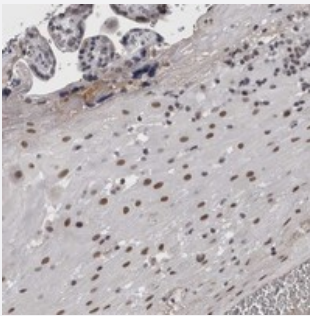


# ARID4B polyclonal antibody

Catalog # PAB21892      Size 100 uL

## Applications



### Immunohistochemistry (Formalin/PFA-fixed paraffin-embedded sections)

Immunohistochemical staining of human placenta with ARID4B polyclonal antibody (Cat # PAB21892) shows moderate nuclear positivity in decidual cells at 1:50-1:200 dilution.

## Specification

<b>Product Description</b>	Rabbit polyclonal antibody raised against recombinant ARID4B.
<b>Immunogen</b>	Recombinant protein corresponding to amino acids of human ARID4B.
<b>Sequence</b>	DNNGKEESKIDHLTNNRNDLISKEEQNSSSLLEENKVHADLVISKPVSKSPERLRKDIENVLSEDTDYEEDEVTKKRKDVKKD TTDKSSKPQIKRGKR
<b>Host</b>	Rabbit
<b>Reactivity</b>	Human
<b>Form</b>	Liquid
<b>Purification</b>	Antigen affinity purification
<b>Isotype</b>	IgG
<b>Recommend Usage</b>	Immunohistochemistry (1:50-1:200) The optimal working dilution should be determined by the end user.
<b>Storage Buffer</b>	In PBS, pH 7.2 (40% glycerol, 0.02% sodium azide)

**Storage Instruction**

Store at 4°C. For long term storage store at -20°C.  
Aliquot to avoid repeated freezing and thawing.

**Note**

This product contains sodium azide: a POISONOUS AND HAZARDOUS SUBSTANCE which should be handled by trained staff only.

## Applications

- Immunohistochemistry (Formalin/PFA-fixed paraffin-embedded sections)

Immunohistochemical staining of human placenta with ARID4B polyclonal antibody (Cat # PAB21892) shows moderate nuclear positivity in decidual cells at 1:50-1:200 dilution.

## Gene Info — ARID4B

**Entrez GeneID**[51742](#)**Protein Accession#**[Q4LE39](#)**Gene Name**

ARID4B

**Gene Alias**

BCAA, BRCAA1, DKFZp313M2420, MGC163290, RBBP1L1, RBP1L1, SAP180

**Gene Description**

AT rich interactive domain 4B (RBP1-like)

**Omim ID**[609696](#)**Gene Ontology**[Hyperlink](#)**Gene Summary**

This gene encodes a protein with sequence similarity to retinoblastoma-binding protein-1. The encoded protein is a subunit of the histone deacetylase-dependant SIN3A transcriptional corepressor complex, which functions in diverse cellular processes including proliferation, differentiation, apoptosis, oncogenesis, and cell fate determination. The gene product is recognized by IgG antibody isolated from a breast cancer patient and appears to be a molecular marker associated with a broad range of human malignancies. Alternate transcriptional splice variants encoding different isoforms have been characterized. [provided by RefSeq]

**Other Designations**

AT rich interactive domain 4B|OTTHUMP00000037596|RBP1-like protein|Rb-binding protein homolog|SIN3A-associated protein 180|breast cancer-associated antigen 1|breast carcinoma-associated antigen|retinoblastoma binding protein 1-like 1|retinoblastoma-binding

## Disease

- [Genetic Predisposition to Disease](#)

- [Schizophrenia](#)
- [Tobacco Use Disorder](#)