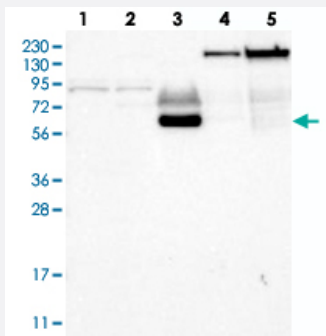


ECM1 polyclonal antibody

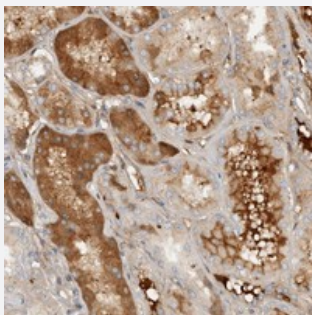
Catalog # PAB21885 Size 100 uL

Applications



Western Blot

Western blot analysis of Lane 1: RT-4, Lane 2: U-251 MG, Lane 3: Human Plasma, Lane 4: Liver, Lane 5: Tonsil with ECM1 polyclonal antibody (Cat # PAB21885).



Immunohistochemistry (Formalin/PFA-fixed paraffin-embedded sections)

Immunohistochemical staining of human kidney with ECM1 polyclonal antibody (Cat # PAB21885) shows distinct cytoplasmic positivity in tubular cells combined with extra cellular immunoreactivity.

Specification

Product Description	Rabbit polyclonal antibody raised against recombinant ECM1.
Immunogen	Recombinant protein corresponding to amino acids of human ECM1.
Sequence	EDTLDKYCDREYAVKTHHHLLCCRHPSPTRDECFARRAPYPNYDRDILTIDIGRVTPNLMGHLCGN QRVLTkHKHIPGLIHNMtARCCDLPFPEQACCAEEEEKLTFINDLCGPRRNWRDPALCCYLSPGDE QVNCFNINYLrNVALVS
Host	Rabbit
Reactivity	Human
Form	Liquid

Purification	Antigen affinity purification
Isotype	IgG
Recommend Usage	Immunohistochemistry (1:50-1:200) Western Blot (1:250-1:500) The optimal working dilution should be determined by the end user.
Storage Buffer	In PBS, pH 7.2 (40% glycerol, 0.02% sodium azide)
Storage Instruction	Store at 4°C. For long term storage store at -20°C. Aliquot to avoid repeated freezing and thawing.
Note	This product contains sodium azide: a POISONOUS AND HAZARDOUS SUBSTANCE which should be handled by trained staff only.

Applications

- Western Blot

Western blot analysis of Lane 1: RT-4, Lane 2: U-251 MG, Lane 3: Human Plasma, Lane 4: Liver, Lane 5: Tonsil with ECM1 polyclonal antibody (Cat # PAB21885).

- Immunohistochemistry (Formalin/PFA-fixed paraffin-embedded sections)

Immunohistochemical staining of human kidney with ECM1 polyclonal antibody (Cat # PAB21885) shows distinct cytoplasmic positivity in tubular cells combined with extra cellular immunoreactivity.

Gene Info — ECM1

Entrez GeneID	1893
Protein Accession#	Q16610
Gene Name	ECM1
Gene Alias	-
Gene Description	extracellular matrix protein 1
Omim ID	247100 602201
Gene Ontology	Hyperlink

Gene Summary

This gene encodes an extracellular protein containing motifs with a cysteine pattern characteristic of the cysteine pattern of the ligand-binding "double-loop" domains of the albumin protein family. This gene maps outside of the epidermal differentiation complex (EDC), a cluster of three gene families involved in epidermal differentiation. Alternatively spliced transcript variants encoding distinct isoforms have been described. [provided by RefSeq]

Other Designations

OTTHUMP00000014932|OTTHUMP00000014934|secretory component p85

Disease

- [Colitis](#)
- [Genetic Predisposition to Disease](#)
- [Inflammatory Bowel Diseases](#)