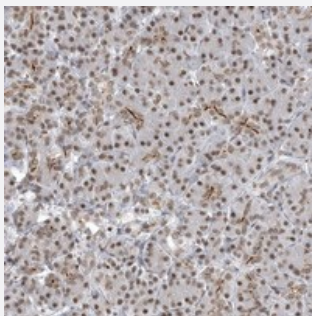


# C8orf47 polyclonal antibody

Catalog # PAB21884      Size 100 uL

## Applications



### Immunohistochemistry (Formalin/PFA-fixed paraffin-embedded sections)

Immunohistochemical staining of human pancreas with C8orf47 polyclonal antibody (Cat # PAB21884) shows moderate nuclear positivity in exocrine cells and positive luminal membranes in intercalated ducts.

## Specification

Product Description	Rabbit polyclonal antibody raised against recombinant C8orf47.
Immunogen	Recombinant protein corresponding to amino acids of human C8orf47.
Sequence	RFPSVTSNEHFSTAEESESCFAQPKPHALGRESTVDGNVQRESRPPLQKLKVSAEPTANGVKP LQEQPLAKDVAPGR
Host	Rabbit
Reactivity	Human
Form	Liquid
Purification	Antigen affinity purification
Isotype	IgG
Recommend Usage	Immunohistochemistry (1:10-1:20) The optimal working dilution should be determined by the end user.
Storage Buffer	In PBS, pH 7.2 (40% glycerol, 0.02% sodium azide)

**Storage Instruction**

Store at 4°C. For long term storage store at -20°C.  
Aliquot to avoid repeated freezing and thawing.

**Note**

This product contains sodium azide: a POISONOUS AND HAZARDOUS SUBSTANCE which should be handled by trained staff only.

## Applications

- Immunohistochemistry (Formalin/PFA-fixed paraffin-embedded sections)

Immunohistochemical staining of human pancreas with C8orf47 polyclonal antibody (Cat # PAB21884) shows moderate nuclear positivity in exocrine cells and positive luminal membranes in intercalated ducts.

## Gene Info — C8orf47

**Entrez GeneID**[203111](#)**Protein Accession#**[Q6P6B1](#)**Gene Name**

C8orf47

**Gene Alias**

FLJ39553

**Gene Description**

chromosome 8 open reading frame 47

**Gene Ontology**[Hyperlink](#)**Other Designations**

hypothetical protein LOC203111