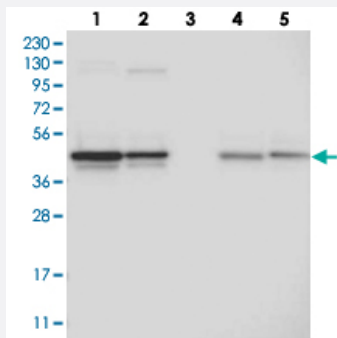


CCBL2 polyclonal antibody

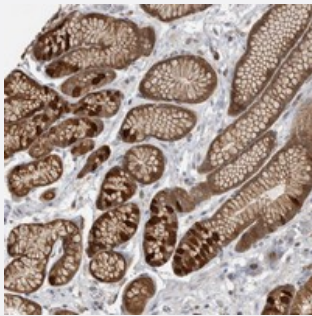
Catalog # PAB21879 Size 100 uL

Applications



Western Blot

Western blot analysis of Lane 1: RT-4, Lane 2: U-251 MG, Lane 3: Human Plasma, Lane 4: Liver, Lane 5: Tonsil with CCBL2 polyclonal antibody (Cat # PAB21879) at 1:250-1:500 dilution.



Immunohistochemistry (Formalin/PFA-fixed paraffin-embedded sections)

Immunohistochemical staining of human stomach with CCBL2 polyclonal antibody (Cat # PAB21879) strong cytoplasmic positivity in glandular cells at 1:1000-1:2500 dilution.

Specification

Product Description	Rabbit polyclonal antibody raised against recombinant CCBL2.
Immunogen	Recombinant protein corresponding to amino acids of human CCBL2.
Sequence	PDGGYFIADVSLDLPDLSDMKNNEPYDYKFVKWMTKHKKLSAIPVSAFCNSETKSQFEKFVRF FIKKDSTLDAAEEIKAWSVQKS
Host	Rabbit
Reactivity	Human
Form	Liquid

Purification	Antigen affinity purification
Isotype	IgG
Recommend Usage	Immunohistochemistry (1:1000-1:2500) Western Blot (1:250-1:500) The optimal working dilution should be determined by the end user.
Storage Buffer	In PBS, pH 7.2 (40% glycerol, 0.02% sodium azide)
Storage Instruction	Store at 4°C. For long term storage store at -20°C. Aliquot to avoid repeated freezing and thawing.
Note	This product contains sodium azide: a POISONOUS AND HAZARDOUS SUBSTANCE which should be handled by trained staff only.

Applications

- Western Blot

Western blot analysis of Lane 1: RT-4, Lane 2: U-251 MG, Lane 3: Human Plasma, Lane 4: Liver, Lane 5: Tonsil with CCBL2 polyclonal antibody (Cat # PAB21879) at 1:250-1:500 dilution.

- Immunohistochemistry (Formalin/PFA-fixed paraffin-embedded sections)

Immunohistochemical staining of human stomach with CCBL2 polyclonal antibody (Cat # PAB21879) strong cytoplasmic positivity in glandular cells at 1:1000-1:2500 dilution.

Gene Info — CCBL2

Entrez GeneID	56267
Protein Accession#	Q6YP21
Gene Name	CCBL2
Gene Alias	DKFZp547N1117, DKFZp667D0223, KAT3, MGC9398, RBM1, RBMXL1, RP4-531M19.2
Gene Description	cysteine conjugate-beta lyase 2
Omim ID	610656
Gene Ontology	Hyperlink

Gene Summary

This gene encodes an aminotransferase that transaminates kynurenine to form kynurenic acid. Kynurenic acid is a metabolite of tryptophan. Multiple alternatively spliced transcript variants that encode different proteins have been described for this gene. This gene shares 5' exon structure with the RNA binding motif protein, X-linked-like 1 locus on chromosome 1, but the coding sequences are non-overlapping. [provided by RefSeq]

Other Designations

OTTHUMP00000012357|OTTHUMP00000012390|RNA binding motif protein, X-linked-like 1|kynurenine aminotransferase III

Disease

- [Tobacco Use Disorder](#)