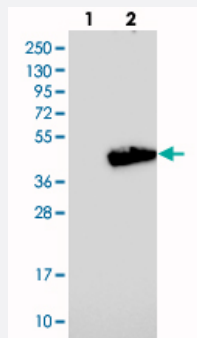


ADPRHL2 polyclonal antibody

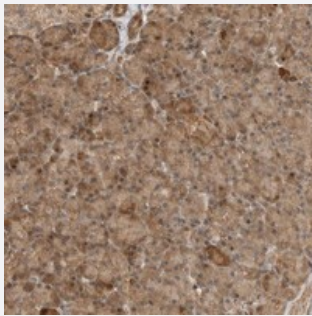
Catalog # PAB21875 Size 100 uL

Applications



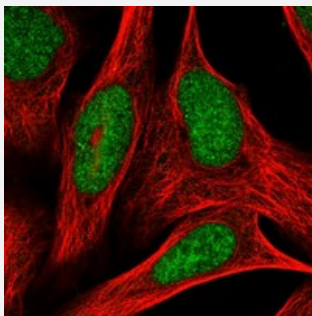
Western Blot (Transfected lysate)

Western blot analysis of Lane 1: Negative control (vector only transfected HEK293T lysate), Lane 2: Over-expression Lysate (Co-expressed with a C-terminal myc-DDK tag (~3.1 kDa) in mammalian HEK293T cells) with ADPRHL2 polyclonal antibody (Cat # PAB21875) at 1:250-1:500 dilution.



Immunohistochemistry (Formalin/PFA-fixed paraffin-embedded sections)

Immunohistochemical staining of human pancreas with ADPRHL2 polyclonal antibody (Cat # PAB21875) shows moderate cytoplasmic positivity in exocrine cells at 1:50-1:200 dilution.



Immunofluorescence

Immunofluorescent staining of human cell line U-2 OS with ADPRHL2 polyclonal antibody (Cat # PAB21875) at 1-4 ug/mL dilution shows positivity in nuclei but not nucleoli.

Specification

Product Description

Rabbit polyclonal antibody raised against recombinant ADPRHL2.

Immunogen

Recombinant protein corresponding to amino acids of human ADPRHL2.

Sequence	VGSFYEAHDTVDLTSVLRHVQSLEPDPGTPGSETEALYTDDTAMARALVQSLLAKEAFDEV MAHRFAQEYKKDPDRGYGAGVV
Host	Rabbit
Reactivity	Human
Form	Liquid
Purification	Antigen affinity purification
Isotype	IgG
Recommend Usage	Immunohistochemistry (1:50-1:200) Western Blot (1:250-1:500) Immunofluorescence (1-4 ug/mL) The optimal working dilution should be determined by the end user.
Storage Buffer	In PBS, pH 7.2 (40% glycerol, 0.02% sodium azide)
Storage Instruction	Store at 4°C. For long term storage store at -20°C. Aliquot to avoid repeated freezing and thawing.
Note	This product contains sodium azide: a POISONOUS AND HAZARDOUS SUBSTANCE which should be handled by trained staff only.

Applications

- Western Blot (Transfected lysate)

Western blot analysis of Lane 1: Negative control (vector only transfected HEK293T lysate), Lane 2: Over-expression Lysate (Co-expressed with a C-terminal myc-DDK tag (~3.1 kDa) in mammalian HEK293T cells) with ADPRHL2 polyclonal antibody (Cat # PAB21875) at 1:250-1:500 dilution.

- Immunohistochemistry (Formalin/PFA-fixed paraffin-embedded sections)

Immunohistochemical staining of human pancreas with ADPRHL2 polyclonal antibody (Cat # PAB21875) shows moderate cytoplasmic positivity in exocrine cells at 1:50-1:200 dilution.

- Immunofluorescence

Immunofluorescent staining of human cell line U-2 OS with ADPRHL2 polyclonal antibody (Cat # PAB21875) at 1-4 ug/mL dilution shows positivity in nuclei but not nucleoli.

Gene Info — ADPRHL2

Entrez GeneID [54936](#)

Protein Accession#	Q9NX46
Gene Name	ADPRHL2
Gene Alias	ARH3, FLJ20446, dJ665N4.2
Gene Description	ADP-ribosylhydrolase like 2
Omim ID	610624
Gene Ontology	Hyperlink
Gene Summary	This gene encodes a member of the ADP-ribosylglycohydrolase family. The encoded enzyme catalyzes the removal of ADP-ribose from ADP-ribosylated proteins. This enzyme localizes to the mitochondria, in addition to the nucleus and cytoplasm
Other Designations	ADP-ribosyl-hydrolase OTTHUMP00000008926 dJ665N4.2 (novel protein)