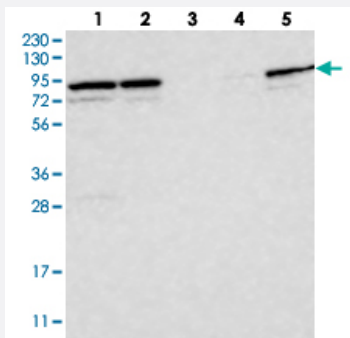


PARP6 polyclonal antibody

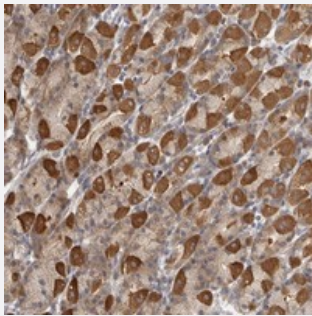
Catalog # PAB21860 Size 100 uL

Applications



Western Blot

Western blot analysis of Lane 1: RT-4, Lane 2: U-251 MG, Lane 3: Human Plasma, Lane 4: Liver, Lane 5: Tonsil with PARP6 polyclonal antibody (Cat # PAB21860) at 1:250-1:500 dilution.



Immunohistochemistry (Formalin/PFA-fixed paraffin-embedded sections)

Immunohistochemical staining of human stomach with PARP6 polyclonal antibody (Cat # PAB21860) shows strong cytoplasmic positivity in Parietal cells at 1:50-1:200 dilution.

Specification

| | |
|----------------------------|--|
| Product Description | Rabbit polyclonal antibody raised against recombinant PARP6. |
| Immunogen | Recombinant protein corresponding to amino acids of human PARP6. |
| Sequence | QLHGAAYGKGYLSPISISFGYSGMGKGQHRMPKDELVQRYNRMNTIPQTRSIQSRFLQSRNLN CIALCEVITSKDLQKHG |
| Host | Rabbit |
| Reactivity | Human, Rat |
| Form | Liquid |

| | |
|---------------------|---|
| Purification | Antigen affinity purification |
| Isotype | IgG |
| Recommend Usage | Immunohistochemistry (1:50-1:200) Western Blot (1:250-1:500) The optimal working dilution should be determined by the end user. |
| Storage Buffer | In PBS, pH 7.2 (40% glycerol, 0.02% sodium azide) |
| Storage Instruction | Store at 4°C. For long term storage store at -20°C. Aliquot to avoid repeated freezing and thawing. |
| Note | This product contains sodium azide: a POISONOUS AND HAZARDOUS SUBSTANCE which should be handled by trained staff only. |

Applications

- Western Blot

Western blot analysis of Lane 1: RT-4, Lane 2: U-251 MG, Lane 3: Human Plasma, Lane 4: Liver, Lane 5: Tonsil with PARP6 polyclonal antibody (Cat # PAB21860) at 1:250-1:500 dilution.

- Immunohistochemistry (Formalin/PFA-fixed paraffin-embedded sections)

Immunohistochemical staining of human stomach with PARP6 polyclonal antibody (Cat # PAB21860) shows strong cytoplasmic positivity in Parietal cells at 1:50-1:200 dilution.

Gene Info — PARP6

| | |
|--------------------|---|
| Entrez GeneID | 56965 |
| Protein Accession# | Q2NL67 |
| Gene Name | PARP6 |
| Gene Alias | MGC131971 |
| Gene Description | poly (ADP-ribose) polymerase family, member 6 |
| Gene Ontology | Hyperlink |
| Gene Summary | O |
| Other Designations | - |

Disease

- [Tobacco Use Disorder](#)