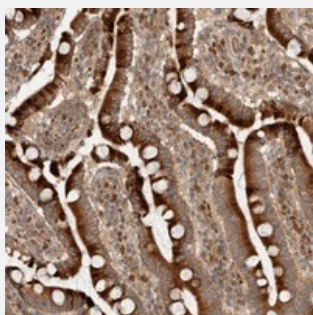


CCPG1 polyclonal antibody

Catalog # PAB21845 Size 100 uL

Applications



Immunohistochemistry (Formalin/PFA-fixed paraffin-embedded sections)

Immunohistochemical staining of human duodenum shows strong cytoplasmic positivity in glandular cells.

Specification

Product Description	Rabbit polyclonal antibody raised against recombinant CCPG1.
Immunogen	Recombinant protein corresponding to amino acids of human CCPG1.
Sequence	DELNDMKDYLSQCQQEQESFIDYKSLKENLARCWTLTEAEKMSFETQKTNLATENQYLRVSLEK EEKALSSLQEELNKLREQIRILEDKGTSTELVKENQKLKQHLEEEKQKKHSFLSQRETLL
Host	Rabbit
Reactivity	Human
Form	Liquid
Purification	Antigen affinity purification
Isotype	IgG
Recommend Usage	Immunohistochemistry (1:50-1:200) The optimal working dilution should be determined by the end user.
Storage Buffer	In PBS, pH 7.2 (40% glycerol, 0.02% sodium azide).

Storage Instruction

Store at 4°C. For long term storage store at -20°C.
Aliquot to avoid repeated freezing and thawing.

Note

This product contains sodium azide: a POISONOUS AND HAZARDOUS SUBSTANCE which should be handled by trained staff only.

Applications

- Immunohistochemistry (Formalin/PFA-fixed paraffin-embedded sections)

Immunohistochemical staining of human duodenum shows strong cytoplasmic positivity in glandular cells.

Gene Info — CCPG1

Entrez GeneID[9236](#)**Protein Accession#**[Q9ULG6](#)**Gene Name**

CCPG1

Gene Alias

CPR8, KIAA1254

Gene Description

cell cycle progression 1

Omim ID[611326](#)**Gene Ontology**[Hyperlink](#)**Other Designations**

cell cycle progression 8 protein